

Product datasheet for **TA313805**

ELAVL2 Rabbit Polyclonal Antibody

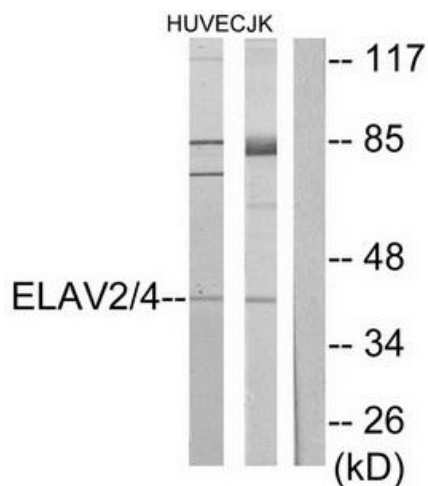
Product data:

Product Type:	Primary Antibodies
Applications:	IF, WB
Recommended Dilution:	WB: 1:500~1:3000, IF: 1:100~1:500, ELISA: 1:10000
Reactivity:	Human, Mouse, Rat
Host:	Rabbit
Isotype:	IgG
Clonality:	Polyclonal
Immunogen:	The antiserum was produced against synthesized peptide derived from internal of human ELAV2/4.
Formulation:	Phosphate buffered saline (without Mg ²⁺ and Ca ²⁺), pH 7.4, 150mM NaCl, 0.02% sodium azide and 50% glycerol.
Concentration:	lot specific
Purification:	The antibody was affinity-purified from rabbit antiserum by affinity-chromatography using epitope-specific immunogen.
Conjugation:	Unconjugated
Storage:	Store at -20°C as received.
Stability:	Stable for 12 months from date of receipt.
Gene Name:	ELAV like neuron-specific RNA binding protein 2
Database Link:	NP_001164666 Entrez Gene 15569 MouseEntrez Gene 286973 RatEntrez Gene 1993 Human Q12926
Synonyms:	HEL-N1; HELN1; HUB
Note:	ELAV2/4 antibody detects endogenous levels of total ELAV2/4 protein.
Protein Families:	Transcription Factors

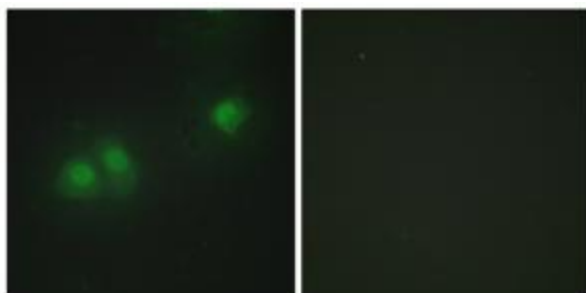


[View online »](#)

Product images:



Western blot analysis of extracts from HUVEC cells and Jurkat cells, using ELAV2/4 antibody. The lane on the right is treated with the synthesized peptide.



Immunofluorescence analysis of HepG2 cells, using ELAV2/4 antibody. The picture on the right is treated with the synthesized peptide.