

Product datasheet for **TA313801**

Eph receptor A2 (EPHA2) Rabbit Polyclonal Antibody

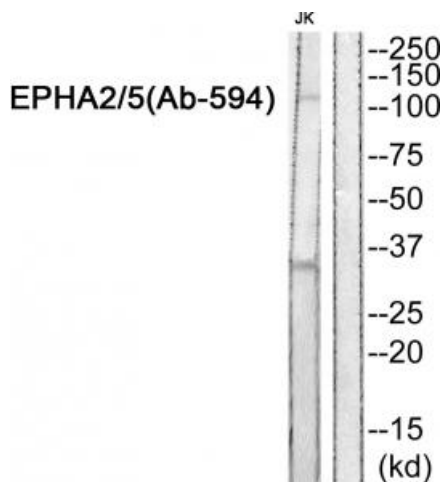
Product data:

Product Type:	Primary Antibodies
Applications:	WB
Recommended Dilution:	WB: 1:500~1:3000, ELISA: 1:20000
Reactivity:	Human, Mouse
Host:	Rabbit
Isotype:	IgG
Clonality:	Polyclonal
Immunogen:	The antiserum was produced against synthesized non-phosphopeptide derived from human EPHA2 around the phosphorylation site of tyrosine 594.
Formulation:	Phosphate buffered saline (without Mg ²⁺ and Ca ²⁺), pH 7.4, 150mM NaCl, 0.02% sodium azide and 50% glycerol.
Concentration:	lot specific
Purification:	The antibody was affinity-purified from rabbit antiserum by affinity-chromatography using epitope-specific immunogen.
Conjugation:	Unconjugated
Storage:	Store at -20°C as received.
Stability:	Stable for 12 months from date of receipt.
Gene Name:	EPH receptor A2
Database Link:	NP_004422 Entrez Gene 13836 Mouse Entrez Gene 1969 Human P29317
Synonyms:	ARCC2; CTPA; CTPP1; CTRCT6; ECK
Note:	EPHA2/5 (Ab-594) Antibody detects endogenous levels of total EPHA2 protein.
Protein Families:	Druggable Genome, Protein Kinase, Transmembrane
Protein Pathways:	Axon guidance

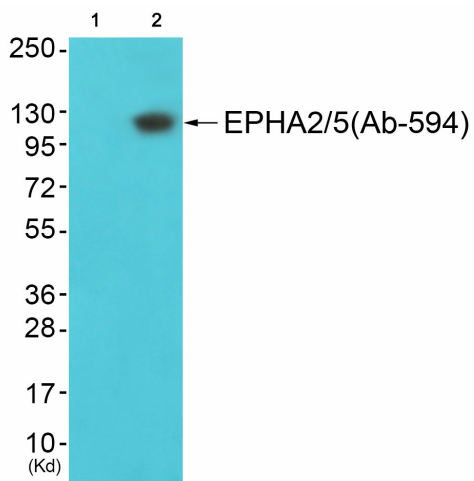


[View online »](#)

Product images:



Western blot analysis of extracts from JK cells, using EPHA2/5 (Ab-594) Antibody. The lane on the right is treated with the synthesized peptide.



Western blot analysis of extracts from JK cells (Lane 2), using EPHA2/5 (Ab-594) Antibody. The lane on the left is treated with synthesized peptide.