

## Product datasheet for **TA313800**

### Eph receptor A2 (EPHA2) Rabbit Polyclonal Antibody

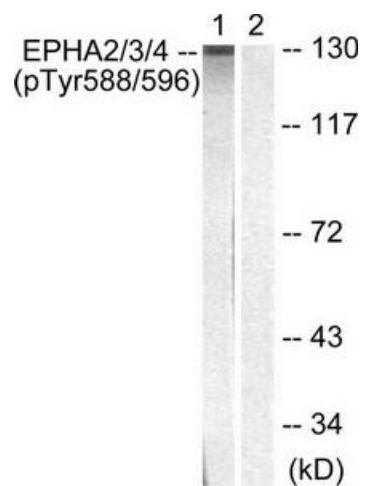
#### Product data:

Product Type:	Primary Antibodies
Applications:	IF, WB
Recommended Dilution:	WB: 1:500~1:3000, IF: 1:100~1:500, ELISA: 1:20000
Reactivity:	Human, Mouse
Modifications:	Phospho-specific
Host:	Rabbit
Isotype:	IgG
Clonality:	Polyclonal
Immunogen:	The antiserum was produced against synthesized phosphopeptide derived from human EPHA2/3/4 around the phosphorylation site of tyrosine 588/596 (T-YP-V-D-P).
Formulation:	Phosphate buffered saline (without Mg <sup>2+</sup> and Ca <sup>2+</sup> ), pH 7.4, 150mM NaCl, 0.02% sodium azide and 50% glycerol.
Concentration:	lot specific
Purification:	The antibody was affinity-purified from rabbit antiserum by affinity-chromatography using epitope-specific immunogen.
Conjugation:	Unconjugated
Storage:	Store at -20°C as received.
Stability:	Stable for 12 months from date of receipt.
Gene Name:	EPH receptor A2
Database Link:	<a href="#">NP_004422</a> <a href="#">Entrez Gene 13836 Mouse</a> <a href="#">Entrez Gene 1969 Human</a> <a href="#">P29317</a>
Synonyms:	ARCC2; CTPA; CTPP1; CTRCT6; ECK
Note:	EPHA2/3/4 (Phospho-Tyr588/596) antibody detects endogenous levels of EPHA2/3/4 only when phosphorylated at tyrosine 588/596
Protein Families:	Druggable Genome, Protein Kinase, Transmembrane
Protein Pathways:	Axon guidance

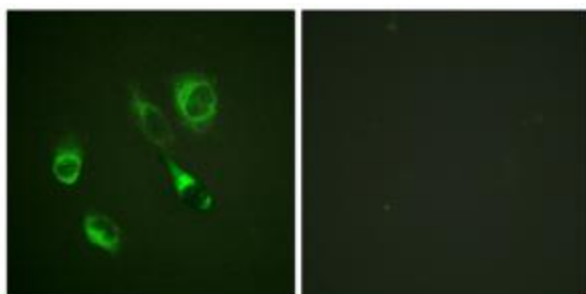


[View online »](#)

Product images:



Western blot analysis of extracts from HepG2 cells, using EPHA2/3/4 (Phospho-Tyr588/596) antibody. The lane on the right is treated with the synthesized peptide.



Immunofluorescence analysis of HeLa cells, using EPHA2/3/4 (Phospho-Tyr588/596) antibody. The picture on the right is treated with the synthesized peptide.