

Product datasheet for **TA313798**

Eph receptor A2 (EPHA2) Rabbit Polyclonal Antibody

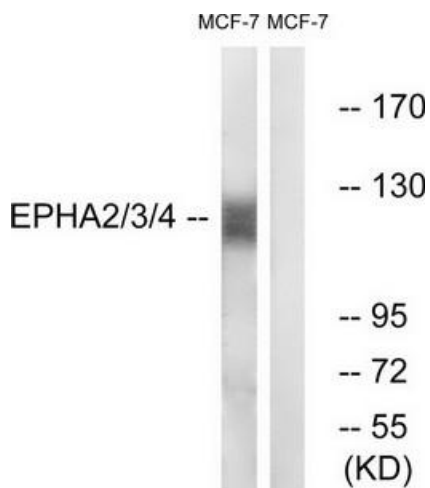
Product data:

Product Type:	Primary Antibodies
Applications:	IF, WB
Recommended Dilution:	WB: 1:500~1:3000, IF: 1:100~1:500, ELISA: 1:40000
Reactivity:	Human, Mouse
Host:	Rabbit
Isotype:	IgG
Clonality:	Polyclonal
Immunogen:	The antiserum was produced against synthesized non-phosphopeptide derived from human EPHA2/3/4 around the phosphorylation site of tyrosine 588/596 (T-YP-V-D-P).
Formulation:	Phosphate buffered saline (without Mg ²⁺ and Ca ²⁺), pH 7.4, 150mM NaCl, 0.02% sodium azide and 50% glycerol.
Concentration:	lot specific
Purification:	The antibody was affinity-purified from rabbit antiserum by affinity-chromatography using epitope-specific immunogen.
Conjugation:	Unconjugated
Storage:	Store at -20°C as received.
Stability:	Stable for 12 months from date of receipt.
Gene Name:	EPH receptor A2
Database Link:	NP_004422 Entrez Gene 13836 Mouse Entrez Gene 1969 Human P29317
Synonyms:	ARCC2; CTPA; CTPP1; CTRCT6; ECK
Note:	EPHA2/3/4 (Ab-588/596) antibody detects endogenous levels of total EPHA2/3/4 protein
Protein Families:	Druggable Genome, Protein Kinase, Transmembrane
Protein Pathways:	Axon guidance

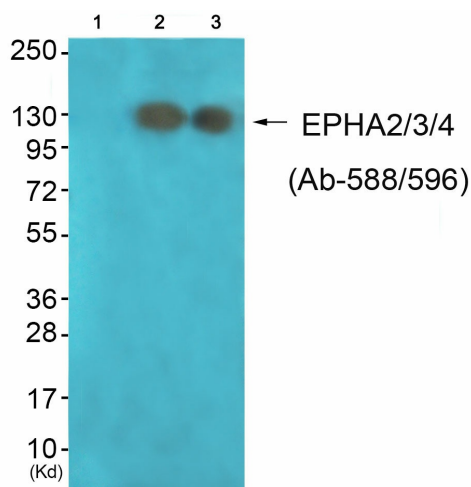


[View online »](#)

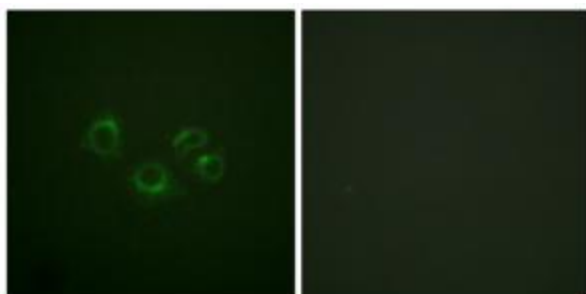
Product images:



Western blot analysis of extracts from NIH/3T3 cells, using EPHA2/3/4 (Ab-588/596) antibody. The lane on the right is treated with the synthesized peptide.



Western blot analysis of extracts from A549 cells (Lane 2) and HepG2 cells (Lane 3), using EPHA2/3/4 (Ab-588/596) Antibody. The lane on the left is treated with synthesized peptide.



Immunofluorescence analysis of A549 cells, using EPHA2/3/4 (Ab-588/596) antibody. The picture on the right is treated with the synthesized peptide.