

## Product datasheet for **TA313797**

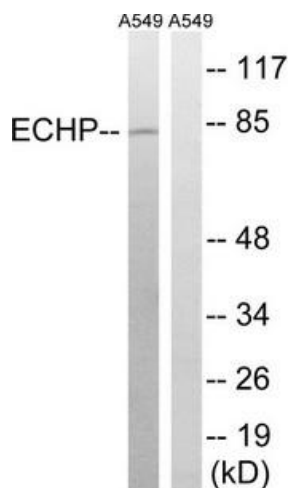
### EHHADH Rabbit Polyclonal Antibody

#### Product data:

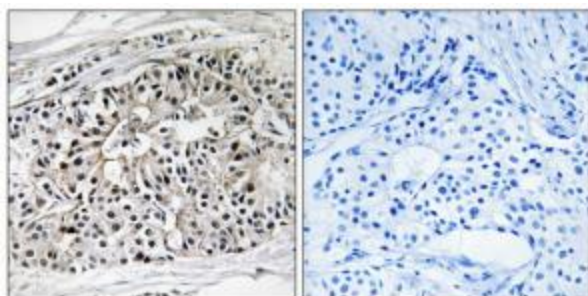
Product Type:	Primary Antibodies
Applications:	IHC, WB
Recommended Dilution:	WB: 1:500~1:3000, IHC: 1:50~1:100, ELISA: 1:10000
Reactivity:	Human, Rat
Host:	Rabbit
Isotype:	IgG
Clonality:	Polyclonal
Immunogen:	The antiserum was produced against synthesized peptide derived from internal of human EHHADH.
Formulation:	Phosphate buffered saline (without Mg <sup>2+</sup> and Ca <sup>2+</sup> ), pH 7.4, 150mM NaCl, 0.02% sodium azide and 50% glycerol.
Concentration:	lot specific
Purification:	The antibody was affinity-purified from rabbit antiserum by affinity-chromatography using epitope-specific immunogen.
Conjugation:	Unconjugated
Storage:	Store at -20°C as received.
Stability:	Stable for 12 months from date of receipt.
Gene Name:	enoyl-CoA, hydratase/3-hydroxyacyl CoA dehydrogenase
Database Link:	<a href="#">NP_001159887</a> <a href="#">Entrez Gene 171142 Rat</a> <a href="#">Entrez Gene 1962 Human</a> <a href="#">Q08426</a>
Synonyms:	ECHD; FRTS3; L-PBE; LBFP; LBP; PBFE
Note:	EHHADH antibody detects endogenous levels of total EHHADH protein.
Protein Pathways:	beta-Alanine metabolism, Butanoate metabolism, Fatty acid metabolism, Limonene and pinene degradation, Lysine degradation, Metabolic pathways, PPAR signaling pathway, Propanoate metabolism, Tryptophan metabolism, Valine, leucine and isoleucine degradation



[View online »](#)

**Product images:**

Western blot analysis of extracts from A549 cells, using EHHADH antibody. The lane on the right is treated with the synthesized peptide.



Immunohistochemistry analysis of paraffin-embedded human breast carcinoma tissue using EHHADH antibody. The picture on the right is treated with the synthesized peptide.