

## Product datasheet for **TA313793**

### MEGF8 Rabbit Polyclonal Antibody

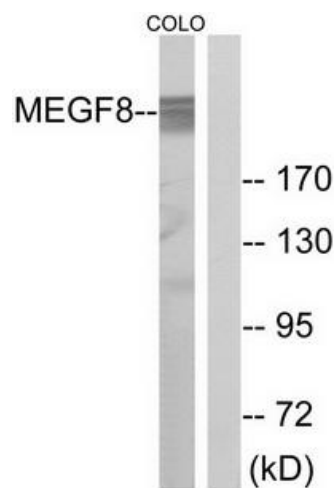
#### Product data:

Product Type:	Primary Antibodies
Applications:	WB
Recommended Dilution:	WB: 1:500~1:3000, ELISA: 1:20000
Reactivity:	Human
Host:	Rabbit
Isotype:	IgG
Clonality:	Polyclonal
Immunogen:	The antiserum was produced against synthesized peptide derived from internal of human MEGF8.
Formulation:	Phosphate buffered saline (without Mg <sup>2+</sup> and Ca <sup>2+</sup> ), pH 7.4, 150mM NaCl, 0.02% sodium azide and 50% glycerol.
Concentration:	lot specific
Purification:	The antibody was affinity-purified from rabbit antiserum by affinity-chromatography using epitope-specific immunogen.
Conjugation:	Unconjugated
Storage:	Store at -20°C as received.
Stability:	Stable for 12 months from date of receipt.
Gene Name:	multiple EGF like domains 8
Database Link:	<a href="#">NP_835222</a> <a href="#">Entrez Gene 90198</a> <a href="#">Entrez Gene 1954 Human</a> <a href="#">Q7Z7M0</a>
Synonyms:	FLJ22365; MGC138147; SBP1
Note:	MEGF8 antibody detects endogenous levels of total MEGF8 protein.



[View online »](#)

## Product images:



Western blot analysis of extracts from COLO cells, using MEGF8 antibody. The lane on the right is treated with the synthesized peptide.