

Product datasheet for **TA313791**

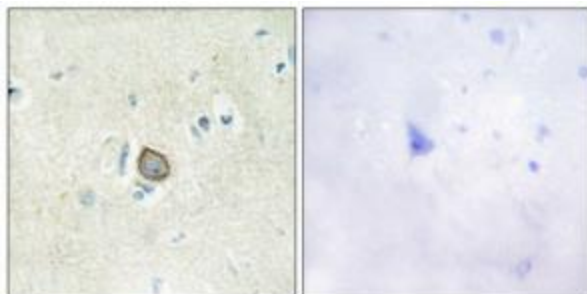
Flamingo homolog 1 (CELSR3) Rabbit Polyclonal Antibody

Product data:

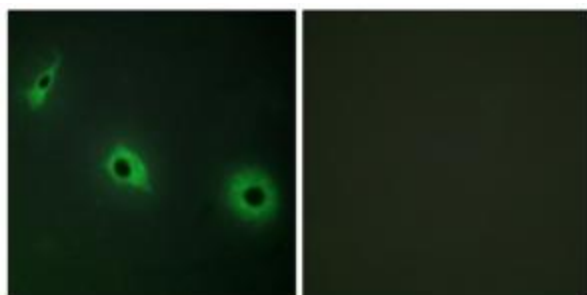
Product Type:	Primary Antibodies
Applications:	IF, IHC
Recommended Dilution:	IHC: 1:50~1:100, IF: 1:100~1:500, ELISA: 1:20000
Reactivity:	Human
Host:	Rabbit
Isotype:	IgG
Clonality:	Polyclonal
Immunogen:	The antiserum was produced against synthesized peptide derived from internal of human CELSR3.
Formulation:	Phosphate buffered saline (without Mg ²⁺ and Ca ²⁺), pH 7.4, 150mM NaCl, 0.02% sodium azide and 50% glycerol.
Concentration:	lot specific
Purification:	The antibody was affinity-purified from rabbit antiserum by affinity-chromatography using epitope-specific immunogen.
Conjugation:	Unconjugated
Storage:	Store at -20°C as received.
Stability:	Stable for 12 months from date of receipt.
Gene Name:	cadherin EGF LAG seven-pass G-type receptor 3
Database Link:	NP_001398 Entrez Gene 1951 Human Q9NYQ7
Synonyms:	ADGRC3; CDHF11; EGFL1; FMI1; HFMI1; MEGF2; RESDA1
Note:	CELSR3 antibody detects endogenous levels of total CELSR3 protein.
Protein Families:	Druggable Genome, Transmembrane



[View online »](#)

Product images:

Immunohistochemistry analysis of paraffin-embedded human brain tissue using CELSR3 antibody. The picture on the right is treated with the synthesized peptide.



Immunofluorescence analysis of HepG2 cells, using CELSR3 antibody. The picture on the right is treated with the synthesized peptide.