

Product datasheet for **TA313790**

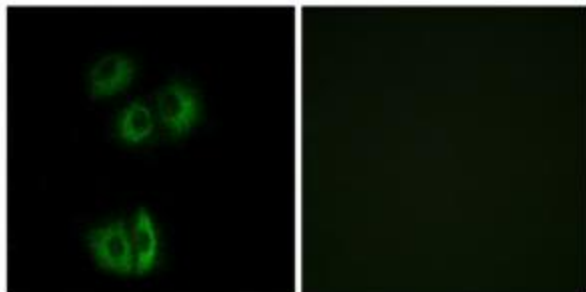
Flamingo homolog 1 (CELSR3) Rabbit Polyclonal Antibody

Product data:

Product Type:	Primary Antibodies
Applications:	IF
Recommended Dilution:	IF: 1:100~1:500, ELISA: 1:40000
Reactivity:	Human, Mouse, Rat
Host:	Rabbit
Isotype:	IgG
Clonality:	Polyclonal
Immunogen:	The antiserum was produced against synthesized peptide derived from internal of human CELSR3.
Formulation:	Phosphate buffered saline (without Mg ²⁺ and Ca ²⁺), pH 7.4, 150mM NaCl, 0.02% sodium azide and 50% glycerol.
Concentration:	lot specific
Purification:	The antibody was affinity-purified from rabbit antiserum by affinity-chromatography using epitope-specific immunogen.
Conjugation:	Unconjugated
Storage:	Store at -20°C as received.
Stability:	Stable for 12 months from date of receipt.
Gene Name:	cadherin EGF LAG seven-pass G-type receptor 3
Database Link:	NP_001398 Entrez Gene 83466 Rat Entrez Gene 107934 Mouse Entrez Gene 1951 Human Q9NYQ7
Synonyms:	ADGRC3; CDHF11; EGFL1; FMI1; HFMI1; MEGF2; RESDA1
Note:	CELSR3 antibody detects endogenous levels of total CELSR3 protein.
Protein Families:	Druggable Genome, Transmembrane



[View online »](#)

Product images:

Immunofluorescence analysis of A549 cells, using CELSR3 antibody. The picture on the right is treated with the synthesized peptide.