

Product datasheet for **TA313788**

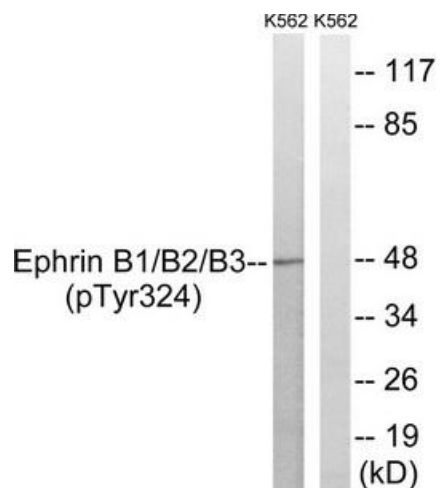
Ephrin B1 (EFNB1) Rabbit Polyclonal Antibody

Product data:

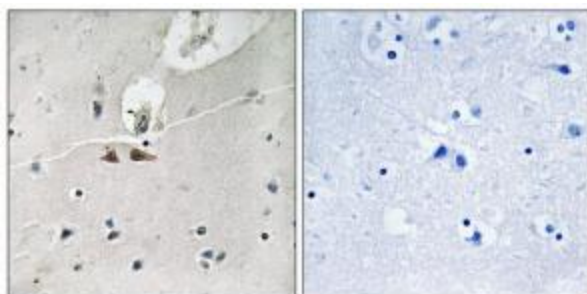
Product Type:	Primary Antibodies
Applications:	IHC, WB
Recommended Dilution:	WB: 1:500~1:3000, IHC: 1:50~1:100, ELISA: 1:20000
Reactivity:	Human, Mouse, Rat
Modifications:	Phospho-specific
Host:	Rabbit
Isotype:	IgG
Clonality:	Polyclonal
Immunogen:	The antiserum was produced against synthesized phosphopeptide derived from human Ephrin B1/B2/B3 around the phosphorylation site of tyrosine 324 (G-D-YP-G-H).
Formulation:	Phosphate buffered saline (without Mg ²⁺ and Ca ²⁺), pH 7.4, 150mM NaCl, 0.02% sodium azide and 50% glycerol.
Concentration:	lot specific
Purification:	The antibody was affinity-purified from rabbit antiserum by affinity-chromatography using epitope-specific immunogen.
Conjugation:	Unconjugated
Storage:	Store at -20°C as received.
Stability:	Stable for 12 months from date of receipt.
Gene Name:	ephrin B1
Database Link:	NP_004420 Entrez Gene 13641 Mouse Entrez Gene 25186 Rat Entrez Gene 1947 Human P98172
Synonyms:	CFND; CFNS; EFB1; EFL3; Elk-L; EPLG2; LERK2
Note:	Ephrin B1/B2/B3 (Phospho-Tyr324) antibody detects endogenous levels of Ephrin B1/B2/B3 only when phosphorylated at tyrosine 324.
Protein Families:	Druggable Genome, Transmembrane
Protein Pathways:	Axon guidance



[View online »](#)

Product images:


Western blot analysis of extracts from K562 cells, treated with serum (20%, 15mins), using Ephrin B1/B2/B3 (Phospho-Tyr324) antibody. The lane on the right is treated with the synthesized peptide.



Immunohistochemistry analysis of paraffin-embedded human brain tissue using Ephrin B1/B2/B3 (Phospho-Tyr324) antibody. The picture on the right is treated with the synthesized peptide.