

Product datasheet for **TA313784**

Endothelin A Receptor (EDNRA) Rabbit Polyclonal Antibody

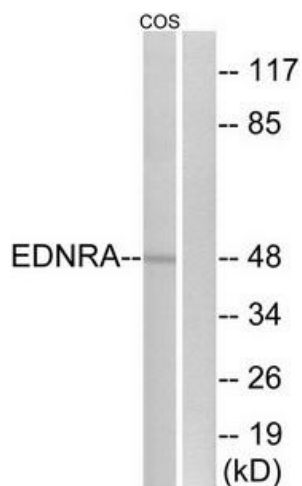
Product data:

| | |
|-----------------------|--|
| Product Type: | Primary Antibodies |
| Applications: | IF, WB |
| Recommended Dilution: | WB: 1:500~1:3000, IF: 1:100~1:500, ELISA: 1:1000 |
| Reactivity: | Human, Mouse |
| Host: | Rabbit |
| Isotype: | IgG |
| Clonality: | Polyclonal |
| Immunogen: | The antiserum was produced against synthesized peptide derived from C-terminal of human EDNRA. |
| Formulation: | Phosphate buffered saline (without Mg ²⁺ and Ca ²⁺), pH 7.4, 150mM NaCl, 0.02% sodium azide and 50% glycerol. |
| Purification: | The antibody was affinity-purified from rabbit antiserum by affinity-chromatography using epitope-specific immunogen. |
| Conjugation: | Unconjugated |
| Storage: | Store at -20°C as received. |
| Stability: | Stable for 12 months from date of receipt. |
| Gene Name: | endothelin receptor type A |
| Database Link: | NP_001159527 Entrez Gene 13617 Mouse Entrez Gene 1909 Human P25101 |
| Synonyms: | ET-A; ETA; ETA-R; ETAR; ETRA; hET-AR |
| Note: | EDNRA antibody detects endogenous levels of total EDNRA protein. |
| Protein Families: | Druggable Genome, GPCR, Transmembrane |
| Protein Pathways: | Calcium signaling pathway, Neuroactive ligand-receptor interaction, Vascular smooth muscle contraction |

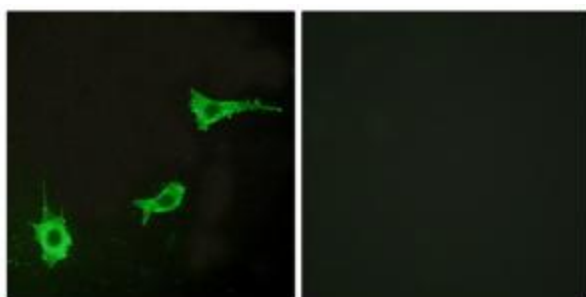


[View online »](#)

Product images:



Western blot analysis of extracts from COS-7 cells, using EDNRA antibody. The lane on the right is treated with the synthesized peptide.



Immunofluorescence analysis of LOVO cells, using EDNRA antibody. The picture on the right is treated with the synthesized peptide.