

## Product datasheet for **TA313783**

### Endothelin A Receptor (EDNRA) Rabbit Polyclonal Antibody

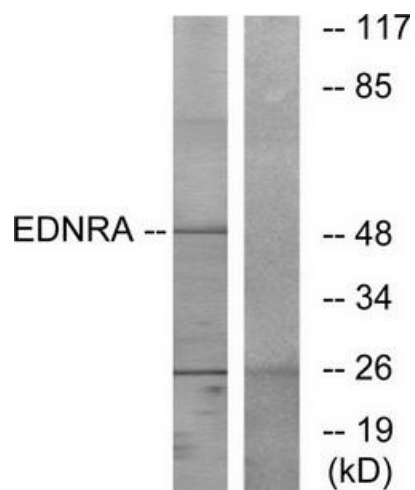
#### Product data:

Product Type:	Primary Antibodies
Applications:	IF, WB
Recommended Dilution:	WB: 1:500~1:3000, IF: 1:100~1:500, ELISA: 1:5000
Reactivity:	Human, Mouse, Rat
Host:	Rabbit
Isotype:	IgG
Clonality:	Polyclonal
Immunogen:	The antiserum was produced against synthesized peptide derived from C-terminal of human EDNRA.
Formulation:	Phosphate buffered saline (without Mg <sup>2+</sup> and Ca <sup>2+</sup> ), pH 7.4, 150mM NaCl, 0.02% sodium azide and 50% glycerol.
Concentration:	lot specific
Purification:	The antibody was affinity-purified from rabbit antiserum by affinity-chromatography using epitope-specific immunogen.
Conjugation:	Unconjugated
Storage:	Store at -20°C as received.
Stability:	Stable for 12 months from date of receipt.
Gene Name:	endothelin receptor type A
Database Link:	<a href="#">NP_001159527</a> <a href="#">Entrez Gene 13617 Mouse</a> <a href="#">Entrez Gene 24326 Rat</a> <a href="#">Entrez Gene 1909 Human</a> <a href="#">P25101</a>
Synonyms:	ET-A; ETA; ETA-R; ETAR; ETRA; hET-AR
Note:	EDNRA antibody detects endogenous levels of total EDNRA protein.
Protein Families:	Druggable Genome, GPCR, Transmembrane
Protein Pathways:	Calcium signaling pathway, Neuroactive ligand-receptor interaction, Vascular smooth muscle contraction

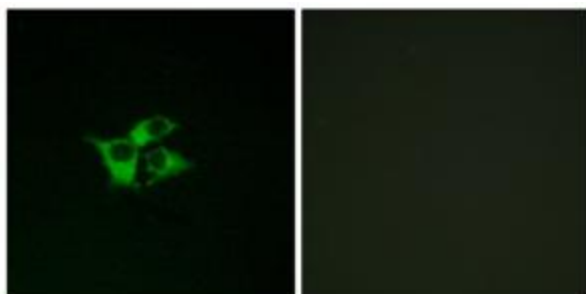


[View online »](#)

## Product images:



Western blot analysis of extracts from HepG2 cells, using EDNRA antibody. The lane on the right is treated with the synthesized peptide.



Immunofluorescence analysis of COS-7 cells, using EDNRA antibody. The picture on the right is treated with the synthesized peptide.