

Product datasheet for **TA313778**

E2F4 Rabbit Polyclonal Antibody

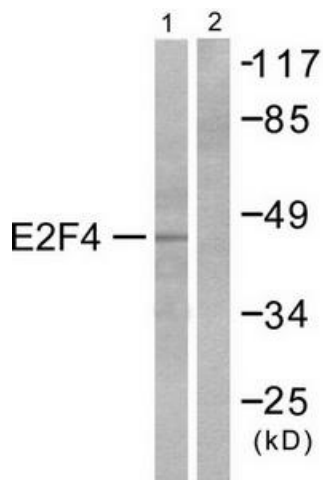
Product data:

Product Type:	Primary Antibodies
Applications:	IHC, WB
Recommended Dilution:	WB: 1:500~1:3000, IHC: 1:50~1:100, ELISA: 1:40000
Reactivity:	Human, Mouse, Rat
Host:	Rabbit
Isotype:	IgG
Clonality:	Polyclonal
Immunogen:	The antiserum was produced against synthesized peptide derived from human E2F4.
Formulation:	Phosphate buffered saline (without Mg ²⁺ and Ca ²⁺), pH 7.4, 150mM NaCl, 0.02% sodium azide and 50% glycerol.
Concentration:	lot specific
Purification:	The antibody was affinity-purified from rabbit antiserum by affinity-chromatography using epitope-specific immunogen.
Conjugation:	Unconjugated
Storage:	Store at -20°C as received.
Stability:	Stable for 12 months from date of receipt.
Gene Name:	E2F transcription factor 4
Database Link:	NP_001941 Entrez Gene 104394 MouseEntrez Gene 100360427 RatEntrez Gene 1874 Human Q16254
Synonyms:	E2F-4
Note:	E2F4 antibody detects endogenous levels of total E2F4 protein.
Protein Families:	Druggable Genome, Transcription Factors
Protein Pathways:	Cell cycle, TGF-beta signaling pathway

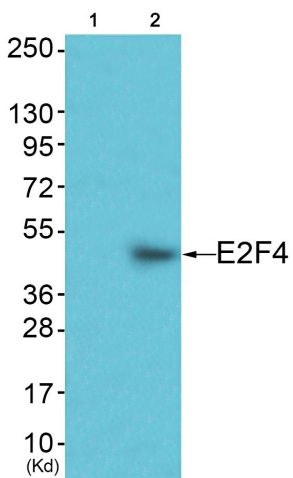


[View online »](#)

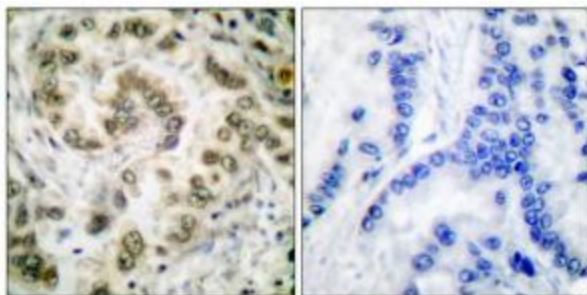
Product images:



Western blot analysis of extracts from COS7 cells, using E2F4 antibody (#TA313778). The lane on the right is treated with the synthesized peptide.



Western blot analysis of extracts from JK cells (Lane 2), using E2F4 Antibody. The lane on the left is treated with synthesized peptide.



Immunohistochemical analysis of paraffin-embedded human lung carcinoma tissue using E2F4 antibody (#TA313778). The picture on the right is treated with the synthesized peptide.