

Product datasheet for **TA313777**

DYRK1A Rabbit Polyclonal Antibody

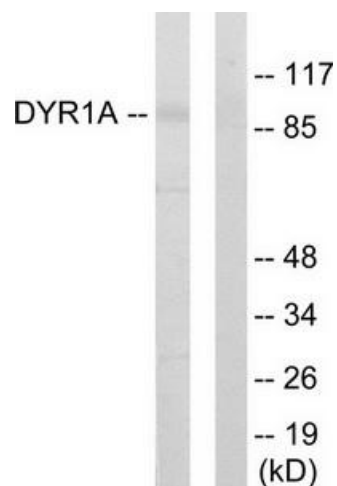
Product data:

Product Type:	Primary Antibodies
Applications:	IF, WB
Recommended Dilution:	WB: 1:500~1:3000, IF: 1:100~1:500, ELISA: 1:1000
Reactivity:	Human, Mouse, Rat
Host:	Rabbit
Isotype:	IgG
Clonality:	Polyclonal
Immunogen:	The antiserum was produced against synthesized peptide derived from internal of human DYRK1A.
Formulation:	Phosphate buffered saline (without Mg ²⁺ and Ca ²⁺), pH 7.4, 150mM NaCl, 0.02% sodium azide and 50% glycerol.
Concentration:	lot specific
Purification:	The antibody was affinity-purified from rabbit antiserum by affinity-chromatography using epitope-specific immunogen.
Conjugation:	Unconjugated
Storage:	Store at -20°C as received.
Stability:	Stable for 12 months from date of receipt.
Gene Name:	dual specificity tyrosine phosphorylation regulated kinase 1A
Database Link:	NP_001387 Entrez Gene 13548 Mouse Entrez Gene 25255 Rat Entrez Gene 1859 Human Q13627
Synonyms:	DYRK; DYRK1; HP86; MNB; MNBH; MRD7
Note:	DYR1A antibody detects endogenous levels of total DYR1A protein.
Protein Families:	Druggable Genome, Protein Kinase

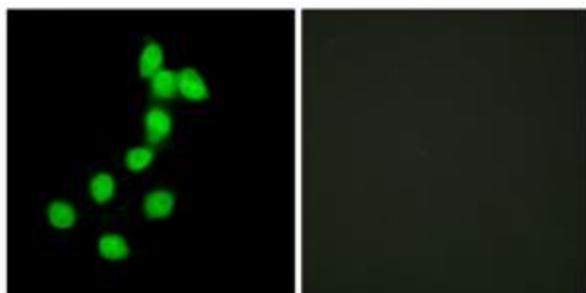


[View online »](#)

Product images:



Western blot analysis of extracts from HepG2 cells, using DYR1A antibody. The lane on the right is treated with the synthesized peptide.



Immunofluorescence analysis of HepG2 cells, using DYR1A antibody. The picture on the right is treated with the synthesized peptide.