

Product datasheet for **TA313769**

Atrophin 1 (ATN1) Rabbit Polyclonal Antibody

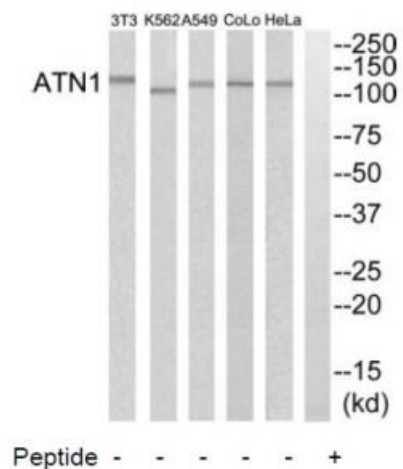
Product data:

Product Type:	Primary Antibodies
Applications:	WB
Recommended Dilution:	WB: 1:500~1:3000, ELISA: 1:5000
Reactivity:	Human, Mouse, Rat
Host:	Rabbit
Isotype:	IgG
Clonality:	Polyclonal
Immunogen:	The antiserum was produced against synthesized peptide derived from N-terminal of human ATN1.
Formulation:	Phosphate buffered saline (without Mg ²⁺ and Ca ²⁺), pH 7.4, 150mM NaCl, 0.02% sodium azide and 50% glycerol.
Concentration:	lot specific
Purification:	The antibody was affinity-purified from rabbit antiserum by affinity-chromatography using epitope-specific immunogen.
Conjugation:	Unconjugated
Storage:	Store at -20°C as received.
Stability:	Stable for 12 months from date of receipt.
Gene Name:	atrophin 1
Database Link:	NP_001007027 Entrez Gene 13498 Mouse Entrez Gene 29515 Rat Entrez Gene 1822 Human P54259
Synonyms:	B37; D12S755E; DRPLA; HRS; NOD
Note:	ATN1 antibody detects endogenous levels of total ATN1 protein.
Protein Families:	Druggable Genome



[View online »](#)

Product images:



Western blot analysis of extracts from HeLa cells, A549 cells, K562 cells, COLO205 cells and NIH-3T3 cells, using ATN1 antibody. The lane on the right is treated with the synthesized peptide.