

## Product datasheet for **TA313763**

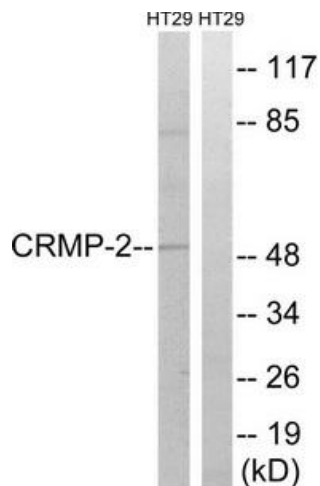
### CRMP2 (DPYSL2) Rabbit Polyclonal Antibody

#### Product data:

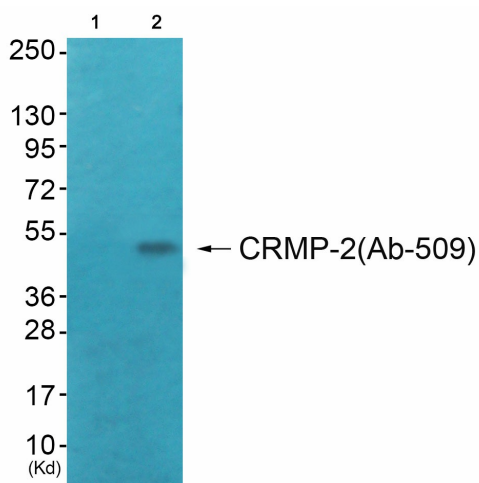
Product Type:	Primary Antibodies
Applications:	IHC, WB
Recommended Dilution:	WB: 1:500~1:3000, IHC: 1:50~1:100, ELISA: 1:20000
Reactivity:	Human, Mouse, Rat
Host:	Rabbit
Isotype:	IgG
Clonality:	Polyclonal
Immunogen:	The antiserum was produced against synthesized non-phosphopeptide derived from human CRMP-2 around the phosphorylation site of threonine 509 (S-V-TP-P-K).
Formulation:	Phosphate buffered saline (without Mg <sup>2+</sup> and Ca <sup>2+</sup> ), pH 7.4, 150mM NaCl, 0.02% sodium azide and 50% glycerol.
Concentration:	lot specific
Purification:	The antibody was affinity-purified from rabbit antiserum by affinity-chromatography using epitope-specific immunogen.
Conjugation:	Unconjugated
Storage:	Store at -20°C as received.
Stability:	Stable for 12 months from date of receipt.
Gene Name:	dihydropyrimidinase like 2
Database Link:	<a href="#">NP_001184222</a> <a href="#">Entrez Gene 12934 Mouse</a> <a href="#">Entrez Gene 25416 Rat</a> <a href="#">Entrez Gene 1808 Human</a> <a href="#">Q16555</a>
Synonyms:	CRMP-2; CRMP2; DHPRP2; DRP-2; DRP2; N2A3; ULIP-2; ULIP2
Note:	CRMP-2 (Ab-509) antibody detects endogenous levels of total CRMP-2 protein.
Protein Families:	Druggable Genome
Protein Pathways:	Axon guidance



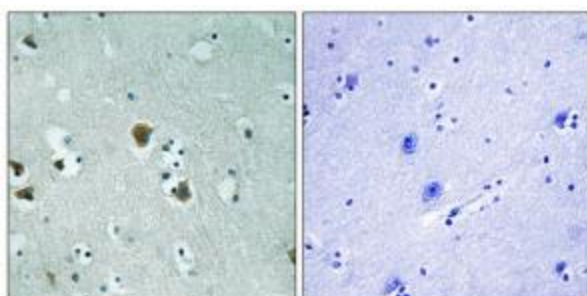
[View online »](#)

**Product images:**


Western blot analysis of extracts from HT-29 cells, treated with heat shock, using CRMP-2 (Ab-509) antibody. The lane on the right is treated with the synthesized peptide.



Western blot analysis of extracts from COS7 cells (Lane 2), using CRMP-2 (Ab-509) Antibody. The lane on the left is treated with synthesized peptide.



Immunohistochemistry analysis of paraffin-embedded human brain tissue using CRMP-2 (Ab-509) antibody. The picture on the right is treated with the synthesized peptide.