

Product datasheet for **TA313762**

DOCK1 Rabbit Polyclonal Antibody

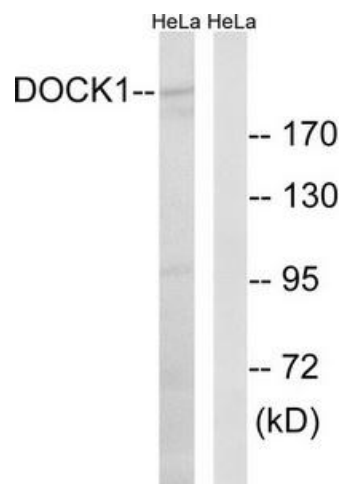
Product data:

Product Type:	Primary Antibodies
Applications:	WB
Recommended Dilution:	WB: 1:500~1:3000, ELISA: 1:40000
Reactivity:	Human, Mouse
Host:	Rabbit
Isotype:	IgG
Clonality:	Polyclonal
Immunogen:	The antiserum was produced against synthesized peptide derived from internal of human DOCK1.
Formulation:	Phosphate buffered saline (without Mg ²⁺ and Ca ²⁺), pH 7.4, 150mM NaCl, 0.02% sodium azide and 50% glycerol.
Concentration:	lot specific
Purification:	The antibody was affinity-purified from rabbit antiserum by affinity-chromatography using epitope-specific immunogen.
Conjugation:	Unconjugated
Storage:	Store at -20°C as received.
Stability:	Stable for 12 months from date of receipt.
Gene Name:	dedicator of cytokinesis 1
Database Link:	NP_001371 Entrez Gene 330662 Mouse Entrez Gene 1793 Human Q14185
Synonyms:	ced5; DOCK180
Note:	DOCK1 antibody detects endogenous levels of total DOCK1 protein.
Protein Families:	Druggable Genome
Protein Pathways:	Focal adhesion, Regulation of actin cytoskeleton



[View online »](#)

Product images:



Western blot analysis of extracts from HeLa cells, using DOCK1 antibody. The lane on the right is treated with the synthesized peptide.