

Product datasheet for **TA313761**

DNMT3B Rabbit Polyclonal Antibody

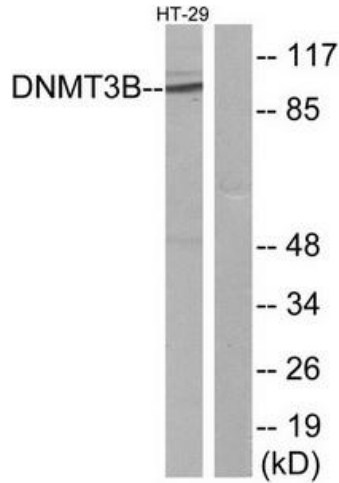
Product data:

Product Type:	Primary Antibodies
Applications:	IF, IHC, WB
Recommended Dilution:	WB: 1:500~1:3000, IHC: 1:50~1:100, IF: 1:100~1:500, ELISA: 1:20000
Reactivity:	Human
Host:	Rabbit
Isotype:	IgG
Clonality:	Polyclonal
Immunogen:	The antiserum was produced against synthesized peptide derived from N-terminal of human DNMT3B.
Formulation:	Phosphate buffered saline (without Mg ²⁺ and Ca ²⁺), pH 7.4, 150mM NaCl, 0.02% sodium azide and 50% glycerol.
Concentration:	lot specific
Purification:	The antibody was affinity-purified from rabbit antiserum by affinity-chromatography using epitope-specific immunogen.
Conjugation:	Unconjugated
Storage:	Store at -20°C as received.
Stability:	Stable for 12 months from date of receipt.
Gene Name:	DNA (cytosine-5-)-methyltransferase 3 beta
Database Link:	NP_787046 Entrez Gene 1789 Human Q9UBC3
Synonyms:	ICF; ICF1; M.Hsa11IB
Note:	DNMT3B antibody detects endogenous levels of total DNMT3B protein.
Protein Families:	Druggable Genome, Embryonic stem cells, Induced pluripotent stem cells, Stem cell - Pluripotency
Protein Pathways:	Cysteine and methionine metabolism, Metabolic pathways

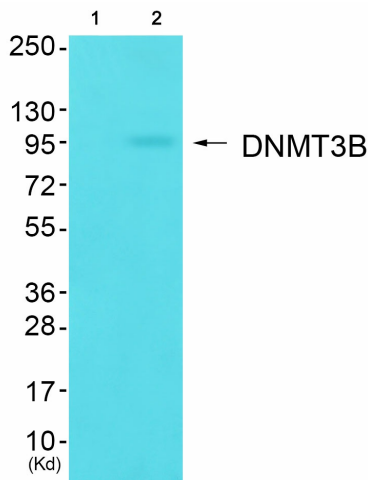


[View online »](#)

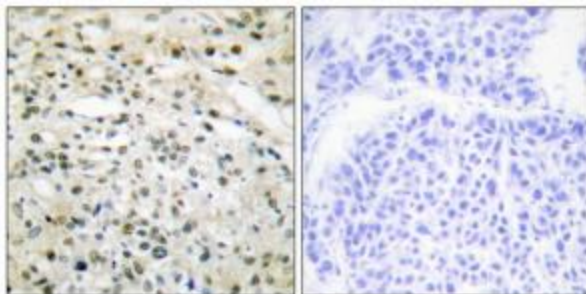
Product images:



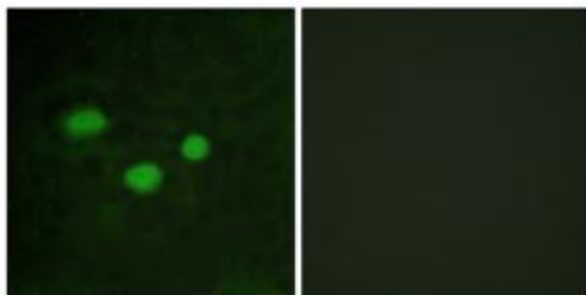
Western blot analysis of extracts from HT-29 cells, using DNMT3B antibody. The lane on the right is treated with the synthesized peptide.



Western blot analysis of extracts from HuvEc cells (Lane 2), using DNMT3B Antibody. The lane on the left is treated with synthesized peptide.



Immunohistochemistry analysis of paraffin-embedded human liver carcinoma tissue using DNMT3B antibody. The picture on the right is treated with the synthesized peptide.



Immunofluorescence analysis of HeLa cells, using DNMT3B antibody. The picture on the right is treated with the synthesized peptide.