

Product datasheet for **TA313760**

Dystrophia myotonica protein kinase (DMPK) Rabbit Polyclonal Antibody

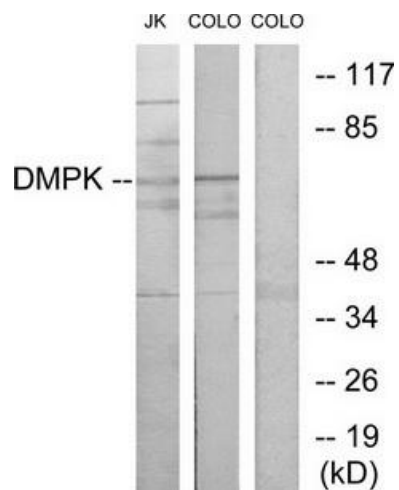
Product data:

Product Type:	Primary Antibodies
Applications:	WB
Recommended Dilution:	WB: 1:500~1:3000, ELISA: 1:40000
Reactivity:	Human
Host:	Rabbit
Isotype:	IgG
Clonality:	Polyclonal
Immunogen:	The antiserum was produced against synthesized peptide derived from N-terminal of human DMPK.
Formulation:	Phosphate buffered saline (without Mg ²⁺ and Ca ²⁺), pH 7.4, 150mM NaCl, 0.02% sodium azide and 50% glycerol.
Concentration:	lot specific
Purification:	The antibody was affinity-purified from rabbit antiserum by affinity-chromatography using epitope-specific immunogen.
Conjugation:	Unconjugated
Storage:	Store at -20°C as received.
Stability:	Stable for 12 months from date of receipt.
Gene Name:	dystrophia myotonica protein kinase
Database Link:	NP_001075029 Entrez Gene 1760 Human Q09013
Synonyms:	DM; DM1; DM1PK; DMK; MDPK; MT-PK
Note:	DMPK antibody detects endogenous levels of total DMPK protein.
Protein Families:	Druggable Genome, Protein Kinase



[View online »](#)

Product images:



Western blot analysis of extracts from Jurkat cells and COLO205 cells, using DMPK antibody. The lane on the right is treated with the synthesized peptide.