

Product datasheet for **TA313752**

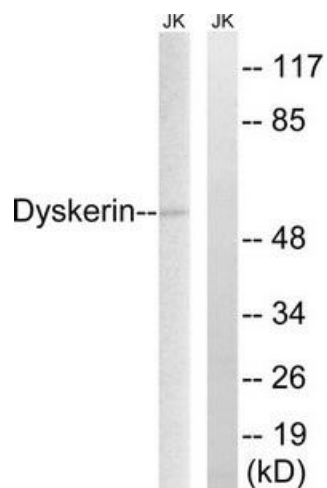
DKC1 Rabbit Polyclonal Antibody

Product data:

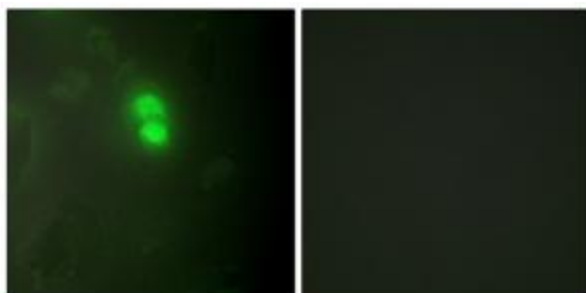
Product Type:	Primary Antibodies
Applications:	IF, WB
Recommended Dilution:	WB: 1:500~1:3000, IF: 1:100~1:500, ELISA: 1:10000
Reactivity:	Human, Mouse, Rat
Host:	Rabbit
Isotype:	IgG
Clonality:	Polyclonal
Immunogen:	The antiserum was produced against synthesized peptide derived from Internal of human Dyskerin.
Formulation:	Phosphate buffered saline (without Mg ²⁺ and Ca ²⁺), pH 7.4, 150mM NaCl, 0.02% sodium azide and 50% glycerol.
Concentration:	lot specific
Purification:	The antibody was affinity-purified from rabbit antiserum by affinity-chromatography using epitope-specific immunogen.
Conjugation:	Unconjugated
Storage:	Store at -20°C as received.
Stability:	Stable for 12 months from date of receipt.
Gene Name:	dyskerin pseudouridine synthase 1
Database Link:	NP_001135935 Entrez Gene 170944 Rat Entrez Gene 245474 Mouse Entrez Gene 1736 Human O60832
Synonyms:	CBF5; DKC; DKCX; NAP57; NOLA4; XAP101
Note:	Dyskerin antibody detects endogenous levels of total Dyskerin protein.
Protein Families:	Druggable Genome



[View online »](#)

Product images:

Western blot analysis of extracts from HeLa cells, using Dyskerin antibody. The lane on the right is treated with the synthesized peptide.



Immunofluorescence analysis of HeLa cells, using Dyskerin antibody. The picture on the right is treated with the synthesized peptide.