

Product datasheet for **TA313748**

AKR1C2 Rabbit Polyclonal Antibody

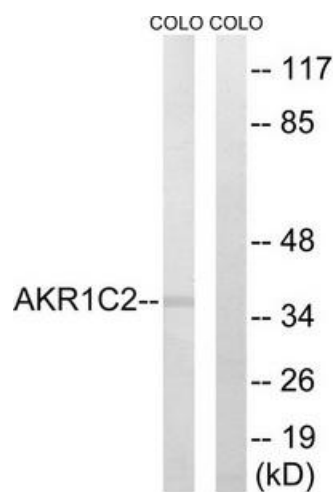
Product data:

Product Type:	Primary Antibodies
Applications:	WB
Recommended Dilution:	WB: 1:500~1:3000, ELISA: 1:20000
Reactivity:	Human
Host:	Rabbit
Isotype:	IgG
Clonality:	Polyclonal
Immunogen:	The antiserum was produced against synthesized peptide derived from internal of human AKR1C2.
Formulation:	Phosphate buffered saline (without Mg ²⁺ and Ca ²⁺), pH 7.4, 150mM NaCl, 0.02% sodium azide and 50% glycerol.
Concentration:	lot specific
Purification:	The antibody was affinity-purified from rabbit antiserum by affinity-chromatography using epitope-specific immunogen.
Conjugation:	Unconjugated
Storage:	Store at -20°C as received.
Stability:	Stable for 12 months from date of receipt.
Gene Name:	aldo-keto reductase family 1, member C2
Database Link:	NP_001128713 Entrez Gene 1646 Human P52895
Synonyms:	AKR1C-pseudo; BABP; DD; DD-2; DD2; DDH2; HAKRD; HBAB; MCDR2; SRXY8; TDD
Note:	AKR1C2 antibody detects endogenous levels of total AKR1C2 protein.
Protein Families:	Druggable Genome
Protein Pathways:	Metabolism of xenobiotics by cytochrome P450



[View online »](#)

Product images:



Western blot analysis of extracts from COLO cells, using AKR1C2 antibody. The lane on the right is treated with the synthesized peptide.