

## Product datasheet for **TA313747**

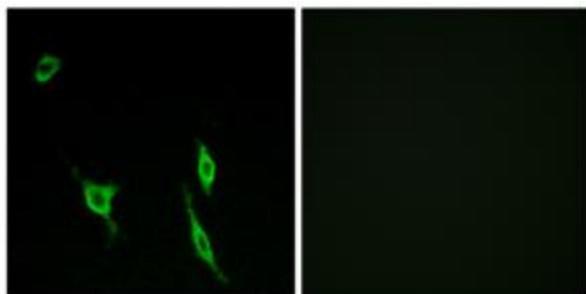
### DCC Rabbit Polyclonal Antibody

#### Product data:

Product Type:	Primary Antibodies
Applications:	IF
Recommended Dilution:	IF: 1:100~1:500, ELISA: 1:20000
Reactivity:	Human, Mouse, Rat
Host:	Rabbit
Isotype:	IgG
Clonality:	Polyclonal
Immunogen:	The antiserum was produced against synthesized peptide derived from internal of human DCC.
Formulation:	Phosphate buffered saline (without Mg <sup>2+</sup> and Ca <sup>2+</sup> ), pH 7.4, 150mM NaCl, 0.02% sodium azide and 50% glycerol.
Concentration:	lot specific
Purification:	The antibody was affinity-purified from rabbit antiserum by affinity-chromatography using epitope-specific immunogen.
Conjugation:	Unconjugated
Storage:	Store at -20°C as received.
Stability:	Stable for 12 months from date of receipt.
Gene Name:	DCC netrin 1 receptor
Database Link:	<a href="#">NP_005206</a> <a href="#">Entrez Gene 13176 MouseEntrez Gene 25311 RatEntrez Gene 1630 Human P43146</a>
Synonyms:	CRC18; CRCR1; IGDCC1; MRMV1; NTN1R1
Note:	DCC antibody detects endogenous levels of total DCC protein.
Protein Families:	Druggable Genome, Transmembrane
Protein Pathways:	Axon guidance, Colorectal cancer, Pathways in cancer



[View online »](#)

**Product images:**

Immunofluorescence analysis of LOVO cells, using DCC antibody. The picture on the right is treated with the synthesized peptide.