

Product datasheet for **TA313745**

ZIP Kinase (DAPK3) Rabbit Polyclonal Antibody

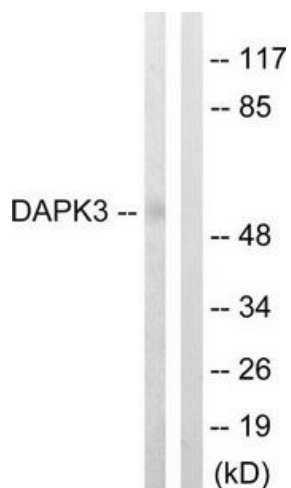
Product data:

Product Type:	Primary Antibodies
Applications:	IHC, WB
Recommended Dilution:	WB: 1:500~1:3000, IHC: 1:50~1:100, ELISA: 1:1000
Reactivity:	Human, Mouse
Host:	Rabbit
Isotype:	IgG
Clonality:	Polyclonal
Immunogen:	The antiserum was produced against synthesized non-phosphopeptide derived from human DAPK3 around the phosphorylation site of threonine 265 (R-M-TP-I-A)
Formulation:	Phosphate buffered saline (without Mg ²⁺ and Ca ²⁺), pH 7.4, 150mM NaCl, 0.02% sodium azide and 50% glycerol.
Concentration:	lot specific
Purification:	The antibody was affinity-purified from rabbit antiserum by affinity-chromatography using epitope-specific immunogen.
Conjugation:	Unconjugated
Storage:	Store at -20°C as received.
Stability:	Stable for 12 months from date of receipt.
Gene Name:	death associated protein kinase 3
Database Link:	NP_001339 Entrez Gene 13144 Mouse Entrez Gene 1613 Human O43293
Synonyms:	DLK; ZIP; ZIPK
Note:	DAPK3 (Ab-265) antibody detects endogenous levels of total DAPK3 protein.
Protein Families:	Druggable Genome, Protein Kinase
Protein Pathways:	Bladder cancer, Pathways in cancer

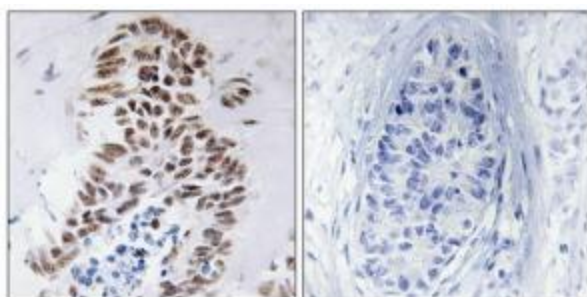


[View online »](#)

Product images:



Western blot analysis of extracts from HuvEc cells, using DAPK3 (Ab-265) antibody. The lane on the right is treated with the synthesized peptide.



Immunohistochemistry analysis of paraffin-embedded human lung carcinoma tissue using DAPK3 (Ab-265) antibody. The picture on the right is treated with the synthesized peptide.