

Product datasheet for **TA313736**

CYP11B1 Rabbit Polyclonal Antibody

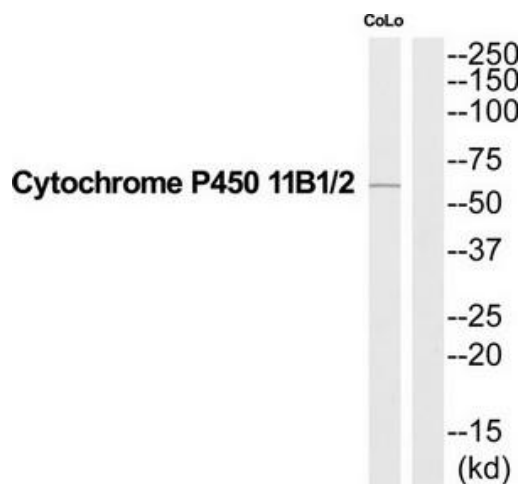
Product data:

Product Type:	Primary Antibodies
Applications:	WB
Recommended Dilution:	WB: 1:500~1:3000, ELISA: 1:40000
Reactivity:	Human
Host:	Rabbit
Isotype:	IgG
Clonality:	Polyclonal
Immunogen:	The antiserum was produced against synthesized peptide derived from C-terminal of human Cytochrome P450 11B1/2.
Formulation:	Phosphate buffered saline (without Mg ²⁺ and Ca ²⁺), pH 7.4, 150mM NaCl, 0.02% sodium azide and 50% glycerol.
Concentration:	lot specific
Purification:	The antibody was affinity-purified from rabbit antiserum by affinity-chromatography using epitope-specific immunogen.
Conjugation:	Unconjugated
Storage:	Store at -20°C as received.
Stability:	Stable for 12 months from date of receipt.
Gene Name:	cytochrome P450 family 11 subfamily B member 1
Database Link:	NP_000488 Entrez Gene 1584 Human P15538
Synonyms:	CPN1; CYP11B; FHI; P450C11
Note:	Cytochrome P450 11B1/2 antibody detects endogenous levels of total Cytochrome P450 11B1/2 protein.
Protein Families:	Druggable Genome, P450
Protein Pathways:	Androgen and estrogen metabolism, C21-Steroid hormone metabolism, Metabolic pathways



[View online »](#)

Product images:



Western blot analysis of extracts from COLO205 cells, using Cytochrome P450 11B1/2 antibody. The lane on the right is treated with the synthesized peptide.