

Product datasheet for **TA313734**

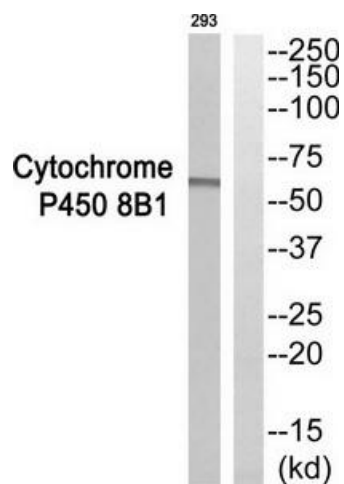
CYP8B1 Rabbit Polyclonal Antibody

Product data:

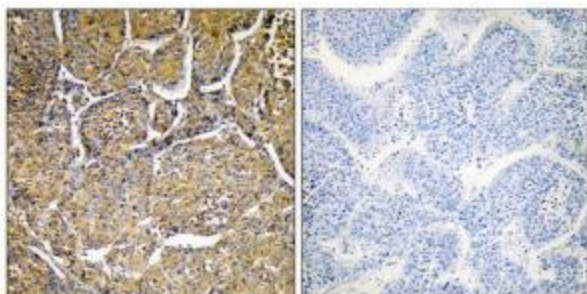
Product Type:	Primary Antibodies
Applications:	IHC, WB
Recommended Dilution:	WB: 1:500~1:3000, IHC: 1:50~1:100, ELISA: 1:40000
Reactivity:	Human, Mouse
Host:	Rabbit
Isotype:	IgG
Clonality:	Polyclonal
Immunogen:	The antiserum was produced against synthesized peptide derived from internal of human Cytochrome P450 8B1.
Formulation:	Phosphate buffered saline (without Mg ²⁺ and Ca ²⁺), pH 7.4, 150mM NaCl, 0.02% sodium azide and 50% glycerol.
Concentration:	lot specific
Purification:	The antibody was affinity-purified from rabbit antiserum by affinity-chromatography using epitope-specific immunogen.
Conjugation:	Unconjugated
Storage:	Store at -20°C as received.
Stability:	Stable for 12 months from date of receipt.
Gene Name:	cytochrome P450 family 8 subfamily B member 1
Database Link:	NP_004382 Entrez Gene 13124 Mouse Entrez Gene 1582 Human Q9UNU6
Synonyms:	CP8B; CYP12
Note:	Cytochrome P450 8B1 antibody detects endogenous levels of total Cytochrome P450 8B1 protein.
Protein Families:	Druggable Genome, P450, Transmembrane
Protein Pathways:	Metabolic pathways, PPAR signaling pathway, Primary bile acid biosynthesis



[View online »](#)

Product images:

Western blot analysis of extracts from 293 cells, using Cytochrome P450 8B1 antibody. The lane on the right is treated with the synthesized peptide.



Immunohistochemistry analysis of paraffin-embedded human liver carcinoma tissue, using Cytochrome P450 8B1 antibody. The picture on the right is treated with the synthesized peptide.