

Product datasheet for **TA313732**

Cytochrome P450 4A (CYP4A11) Rabbit Polyclonal Antibody

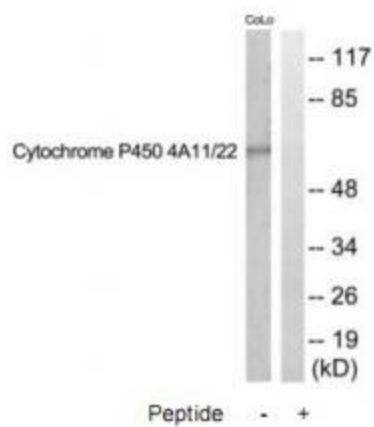
Product data:

Product Type:	Primary Antibodies
Applications:	WB
Recommended Dilution:	WB: 1:500~1:3000, ELISA: 1:40000
Reactivity:	Human
Host:	Rabbit
Isotype:	IgG
Clonality:	Polyclonal
Immunogen:	The antiserum was produced against synthesized peptide derived from internal of human CYTOCHROME P450 4A11/22.
Formulation:	Phosphate buffered saline (without Mg ²⁺ and Ca ²⁺), pH 7.4, 150mM NaCl, 0.02% sodium azide and 50% glycerol.
Concentration:	lot specific
Purification:	The antibody was affinity-purified from rabbit antiserum by affinity-chromatography using epitope-specific immunogen.
Conjugation:	Unconjugated
Storage:	Store at -20°C as received.
Stability:	Stable for 12 months from date of receipt.
Gene Name:	cytochrome P450 family 4 subfamily A member 11
Database Link:	NP_000769 Entrez Gene 1579 Human Q02928
Synonyms:	CP4Y; CYP4A2; CYP4A11
Note:	CYTOCHROME P450 4A11/22 antibody detects endogenous levels of total CYTOCHROME P450 4A11/22 protein.
Protein Families:	Druggable Genome, P450, Transmembrane
Protein Pathways:	Arachidonic acid metabolism, Fatty acid metabolism, Metabolic pathways, PPAR signaling pathway, Retinol metabolism, Vascular smooth muscle contraction



[View online »](#)

Product images:



Western blot analysis of extracts from COLO205, HuvEc and HeLa cells, using CYTOCHROME P450 4A11/22 antibody. The lane on the right is treated with the synthesized peptide.