

## Product datasheet for **TA313730**

### Cytochrome P450 3A4 (CYP3A4) Rabbit Polyclonal Antibody

#### Product data:

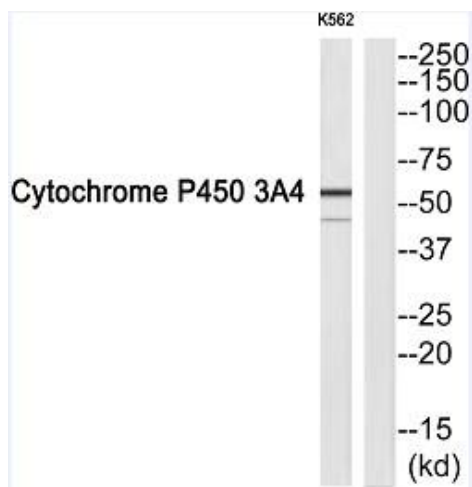
Product Type:	Primary Antibodies
Applications:	IHC, WB
Recommended Dilution:	IHC: 1:50~1:100, ELISA: 1:40000
Reactivity:	Human, Mouse, Rat
Host:	Rabbit
Isotype:	IgG
Clonality:	Polyclonal
Immunogen:	The antiserum was produced against synthesized peptide derived from internal of human Cytochrome P450 3A4.
Formulation:	Phosphate buffered saline (without Mg <sup>2+</sup> and Ca <sup>2+</sup> ), pH 7.4, 150mM NaCl, 0.02% sodium azide and 50% glycerol.
Concentration:	lot specific
Purification:	The antibody was affinity-purified from rabbit antiserum by affinity-chromatography using epitope-specific immunogen.
Conjugation:	Unconjugated
Storage:	Store at -20°C as received.
Stability:	Stable for 12 months from date of receipt.
Gene Name:	cytochrome P450 family 3 subfamily A member 4
Database Link:	<a href="#">NP_059488</a> <a href="#">Entrez Gene 1576 Human P08684</a>
Synonyms:	CP33; CP34; CYP3A; CYP3A3; CYP3A4; CYP3A5; HLP; NF-25; P450C3; P450PCN1
Note:	Cytochrome P450 3A4 antibody detects endogenous levels of total Cytochrome P450 3A4 protein.
Protein Families:	Druggable Genome, ES Cell Differentiation/IPS, P450, Transmembrane



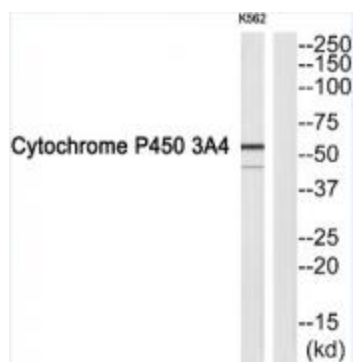
[View online »](#)

**Protein Pathways:** Drug metabolism - cytochrome P450, Drug metabolism - other enzymes, Linoleic acid metabolism, Metabolic pathways, Metabolism of xenobiotics by cytochrome P450, Retinol metabolism

**Product images:**



Western blot analysis of extracts from K562 cells, using P450 3A4 antibody. The lane on the right is treated with the synthesized peptide.



Immunohistochemistry analysis of paraffin-embedded human brain tissue using Cytochrome P450 3A4 antibody. The picture on the right is treated with the synthesized peptide.