

Product datasheet for **TA313727**

Cytochrome P450 2D6 (CYP2D6) Rabbit Polyclonal Antibody

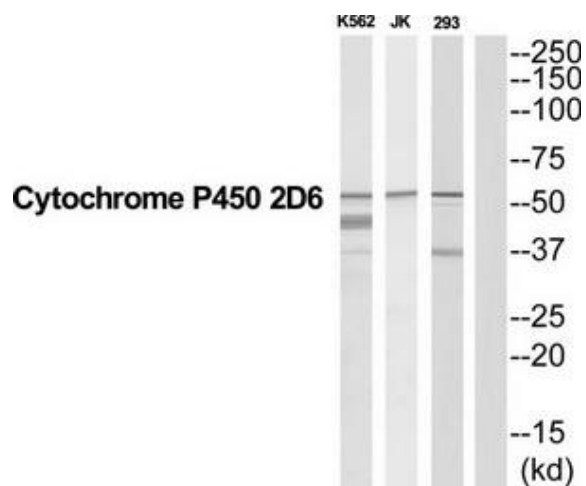
Product data:

Product Type:	Primary Antibodies
Applications:	WB
Recommended Dilution:	WB: 1:500~1:3000, ELISA: 1:40000
Reactivity:	Human
Host:	Rabbit
Isotype:	IgG
Clonality:	Polyclonal
Immunogen:	The antiserum was produced against synthesized peptide derived from Internal of human CYP2D6.
Formulation:	Phosphate buffered saline (without Mg ²⁺ and Ca ²⁺), pH 7.4, 150mM NaCl, 0.02% sodium azide and 50% glycerol.
Concentration:	lot specific
Purification:	The antibody was affinity-purified from rabbit antiserum by affinity-chromatography using epitope-specific immunogen.
Conjugation:	Unconjugated
Storage:	Store at -20°C as received.
Stability:	Stable for 12 months from date of receipt.
Gene Name:	cytochrome P450 family 2 subfamily D member 6
Database Link:	NP_000097 Entrez Gene 1565 Human P10635
Synonyms:	CPD6; CYP2D; CYP2D7AP; CYP2D7BP; CYP2D7P2; CYP2D8P2; CYP2DL1; CYP1ID6; P450-DB1; P450C2D; P450DB1
Note:	CYP2D6 antibody detects endogenous levels of total CYP2D6 protein.
Protein Families:	Druggable Genome, P450, Transmembrane
Protein Pathways:	Drug metabolism - cytochrome P450



[View online »](#)

Product images:



Western blot analysis of extracts from 293/Jurkat/K562 cells, using CYP2D6 antibody. The lane on the right is treated with the synthesized peptide.