

Product datasheet for **TA313723**

CYP2C18 Rabbit Polyclonal Antibody

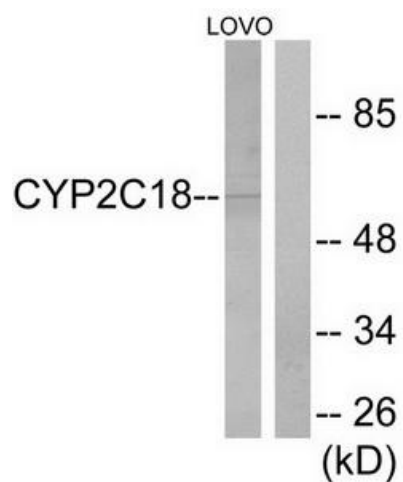
Product data:

Product Type:	Primary Antibodies
Applications:	WB
Recommended Dilution:	WB: 1:500~1:3000, ELISA: 1:20000
Reactivity:	Human
Host:	Rabbit
Isotype:	IgG
Clonality:	Polyclonal
Immunogen:	The antiserum was produced against synthesized peptide derived from internal of human Cytochrome P450 2C8/9/18/19.
Formulation:	Phosphate buffered saline (without Mg ²⁺ and Ca ²⁺), pH 7.4, 150mM NaCl, 0.02% sodium azide and 50% glycerol.
Concentration:	lot specific
Purification:	The antibody was affinity-purified from rabbit antiserum by affinity-chromatography using epitope-specific immunogen.
Conjugation:	Unconjugated
Storage:	Store at -20°C as received.
Stability:	Stable for 12 months from date of receipt.
Gene Name:	cytochrome P450 family 2 subfamily C member 18
Database Link:	NP_000763 Entrez Gene 1562 Human P33260
Synonyms:	29C; CPCI; CYP2C; CYP2C17; P450-6B; P450IIC17
Note:	Cytochrome P450 2C8/9/18/19 antibody detects endogenous levels of total Cytochrome P450 2C8/9/18/19 protein.
Protein Families:	Druggable Genome, P450
Protein Pathways:	Arachidonic acid metabolism, Drug metabolism - cytochrome P450, Linoleic acid metabolism, Metabolic pathways, Metabolism of xenobiotics by cytochrome P450, Retinol metabolism



[View online »](#)

Product images:



Western blot analysis of extracts from LOVO cells, using Cytochrome P450 2C8/9/18/19 antibody. The lane on the right is treated with the synthesized peptide.