

Product datasheet for **TA313719**

CYP2A7 Rabbit Polyclonal Antibody

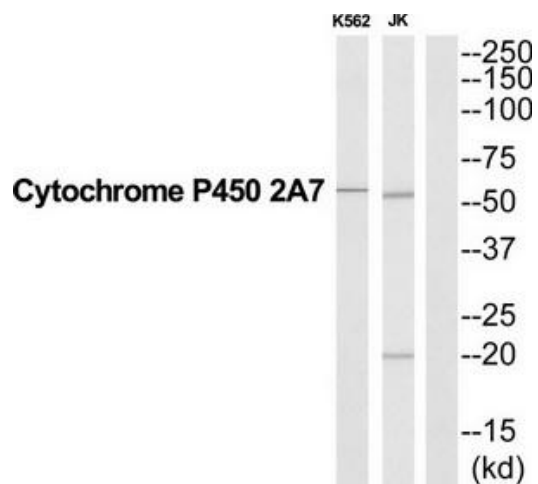
Product data:

Product Type:	Primary Antibodies
Applications:	WB
Recommended Dilution:	WB: 1:500~1:3000, ELISA: 1:40000
Reactivity:	Human
Host:	Rabbit
Isotype:	IgG
Clonality:	Polyclonal
Immunogen:	The antiserum was produced against synthesized peptide derived from Internal of human CYP2A7.
Formulation:	Phosphate buffered saline (without Mg ²⁺ and Ca ²⁺), pH 7.4, 150mM NaCl, 0.02% sodium azide and 50% glycerol.
Concentration:	lot specific
Purification:	The antibody was affinity-purified from rabbit antiserum by affinity-chromatography using epitope-specific immunogen.
Conjugation:	Unconjugated
Storage:	Store at -20°C as received.
Stability:	Stable for 12 months from date of receipt.
Gene Name:	cytochrome P450 family 2 subfamily A member 7
Database Link:	NP_000755 Entrez Gene 1549 Human P20853
Synonyms:	CPA7; CPAD; CYP2A; CYP11A7; P450-IIA4
Note:	CYP2A7 antibody detects endogenous levels of total CYP2A7protein.
Protein Families:	Druggable Genome, P450, Transmembrane
Protein Pathways:	Caffeine metabolism, Drug metabolism - cytochrome P450, Drug metabolism - other enzymes, Metabolic pathways, Retinol metabolism



[View online »](#)

Product images:



Western blot analysis of extracts from K562/Jurkat cells, using CYP2A7 antibody. The lane on the right is treated with the synthesized peptide.