

## Product datasheet for **TA313716**

### CXADR Rabbit Polyclonal Antibody

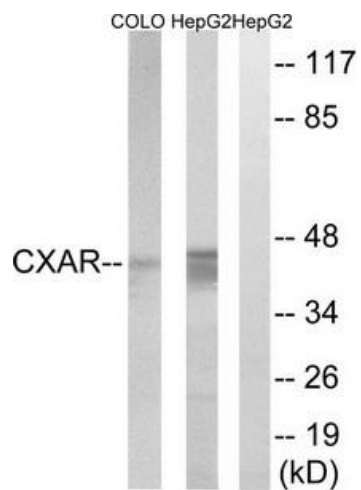
#### Product data:

Product Type:	Primary Antibodies
Applications:	WB
Recommended Dilution:	WB: 1:500~1:3000, ELISA: 1:20000
Reactivity:	Mouse, Rat, Human
Host:	Rabbit
Isotype:	IgG
Clonality:	Polyclonal
Immunogen:	The antiserum was produced against synthesized peptide derived from internal of human CXADR.
Formulation:	Phosphate buffered saline (without Mg <sup>2+</sup> and Ca <sup>2+</sup> ), pH 7.4, 150mM NaCl, 0.02% sodium azide and 50% glycerol.
Concentration:	lot specific
Purification:	The antibody was affinity-purified from rabbit antiserum by affinity-chromatography using epitope-specific immunogen.
Conjugation:	Unconjugated
Storage:	Store at -20°C as received.
Stability:	Stable for 12 months from date of receipt.
Gene Name:	coxsackie virus and adenovirus receptor
Database Link:	<a href="#">NP_001329</a> <a href="#">Entrez Gene 13052 Mouse</a> <a href="#">Entrez Gene 89843 Rat</a> <a href="#">Entrez Gene 1525 Human</a> <a href="#">P78310</a>
Synonyms:	6; CAR; CAR4; HCAR
Note:	CXADR antibody detects endogenous levels of total CXADR protein.
Protein Families:	Druggable Genome, Stem cell - Pluripotency, Transmembrane
Protein Pathways:	Viral myocarditis



[View online »](#)

## Product images:



Western blot analysis of extracts from COLO cells and HepG2 cells, using CXADR antibody. The lane on the right is treated with the synthesized peptide.