

Product datasheet for **TA313715**

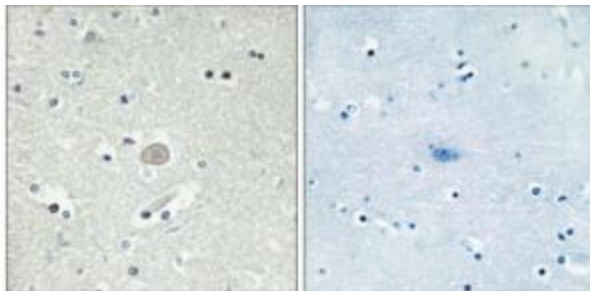
CX3CR1 Rabbit Polyclonal Antibody

Product data:

Product Type:	Primary Antibodies
Applications:	IF, IHC
Recommended Dilution:	IHC: 1:50~1:100, IF: 1:100~1:500, ELISA: 1:5000
Reactivity:	Human
Host:	Rabbit
Isotype:	IgG
Clonality:	Polyclonal
Immunogen:	The antiserum was produced against synthesized peptide derived from internal of human CX3CR1.
Formulation:	Phosphate buffered saline (without Mg ²⁺ and Ca ²⁺), pH 7.4, 150mM NaCl, 0.02% sodium azide and 50% glycerol.
Concentration:	lot specific
Purification:	The antibody was affinity-purified from rabbit antiserum by affinity-chromatography using epitope-specific immunogen.
Conjugation:	Unconjugated
Storage:	Store at -20°C as received.
Stability:	Stable for 12 months from date of receipt.
Gene Name:	C-X3-C motif chemokine receptor 1
Database Link:	NP_001328 Entrez Gene 1524 Human P49238
Synonyms:	CCRL1; CMKBRL1; CMKDR1; GPR13; GPRV28; V28
Note:	CX3CR1 antibody detects endogenous levels of total CX3CR1 protein.
Protein Families:	Druggable Genome, GPCR, Transmembrane
Protein Pathways:	Chemokine signaling pathway, Cytokine-cytokine receptor interaction



[View online »](#)

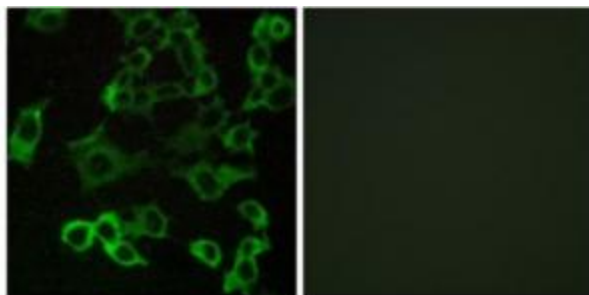
Product images:

Peptide

-

+

Immunohistochemistry analysis of paraffin-embedded human brain tissue, using CX3CR1 antibody. The picture on the right is treated with the synthesized peptide.



Peptide

-

+

Immunofluorescence analysis of COS-7 cells, using CX3CR1 antibody. The picture on the right is treated with the synthesized peptide.