

## Product datasheet for **TA313714**

### CUX1 Rabbit Polyclonal Antibody

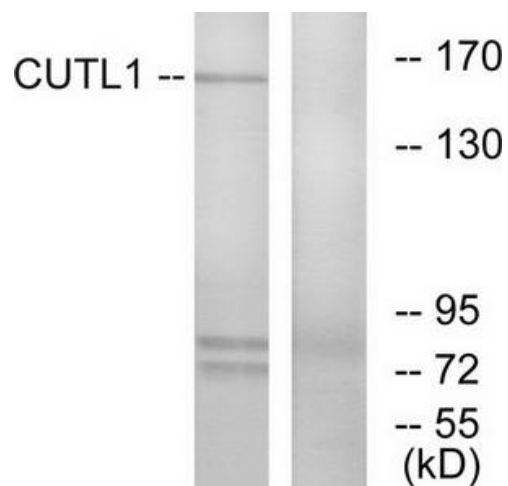
#### Product data:

Product Type:	Primary Antibodies
Applications:	WB
Recommended Dilution:	WB: 1:500~1:3000, ELISA: 1:40000
Reactivity:	Human, Mouse
Host:	Rabbit
Isotype:	IgG
Clonality:	Polyclonal
Immunogen:	The antiserum was produced against synthesized peptide derived from N-terminal of human CUTL1.
Formulation:	Phosphate buffered saline (without Mg <sup>2+</sup> and Ca <sup>2+</sup> ), pH 7.4, 150mM NaCl, 0.02% sodium azide and 50% glycerol.
Concentration:	lot specific
Purification:	The antibody was affinity-purified from rabbit antiserum by affinity-chromatography using epitope-specific immunogen.
Conjugation:	Unconjugated
Storage:	Store at -20°C as received.
Stability:	Stable for 12 months from date of receipt.
Gene Name:	cut like homeobox 1
Database Link:	<a href="#">NP_853530</a> <a href="#">Entrez Gene 13047 Mouse</a> <a href="#">Entrez Gene 1523 Human</a> <a href="#">Q13948</a>
Synonyms:	CASP; CDP; CDP1; Clox; COY1; Cut; CUTL1; CUX; Cux; GOLIM6; Nbla10317; p100; p110; p200
Note:	CUTL1 antibody detects endogenous levels of total CUTL1 protein.
Protein Families:	Transcription Factors, Transmembrane



[View online »](#)

## Product images:



Western blot analysis of extracts from K562 cells, using CUTL1 antibody. The lane on the right is treated with the synthesized peptide.