

Product datasheet for **TA313710**

Cathepsin G (CTSG) Rabbit Polyclonal Antibody

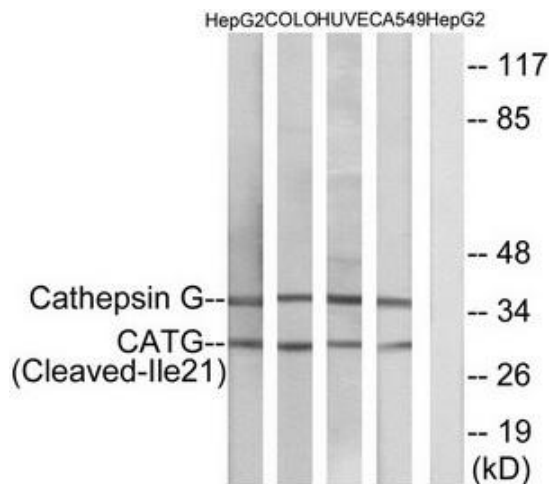
Product data:

Product Type:	Primary Antibodies
Applications:	WB
Recommended Dilution:	WB: 1:500~1:3000, ELISA: 1:20000
Reactivity:	Human, Mouse, Rat
Host:	Rabbit
Isotype:	IgG
Clonality:	Polyclonal
Immunogen:	The antiserum was produced against synthesized peptide derived from human CATG.
Formulation:	Phosphate buffered saline (without Mg ²⁺ and Ca ²⁺), pH 7.4, 150mM NaCl, 0.02% sodium azide and 50% glycerol.
Concentration:	lot specific
Purification:	The antibody was affinity-purified from rabbit antiserum by affinity-chromatography using epitope-specific immunogen.
Conjugation:	Unconjugated
Storage:	Store at -20°C as received.
Stability:	Stable for 12 months from date of receipt.
Gene Name:	cathepsin G
Database Link:	NP_001902 Entrez Gene 13035 MouseEntrez Gene 290257 RatEntrez Gene 1511 Human P08311
Synonyms:	CATG; CG
Note:	CATG (Cleaved-Ile21) antibody detects endogenous levels of fragment of activated CATG resulting from cleavage adjacent to Ile21.
Protein Families:	Druggable Genome, Protease
Protein Pathways:	Lysosome, Neuroactive ligand-receptor interaction, Renin-angiotensin system, Systemic lupus erythematosus



[View online »](#)

Product images:



Western blot analysis of extracts from HepG2 cells, COLO cells, HUVEC cells and A549 cells, using CATG (Cleaved-Ile21) antibody. The lane on the right is treated with the synthesized peptide.