

Product datasheet for **TA313706**

Cystatin SN (CST1) Rabbit Polyclonal Antibody

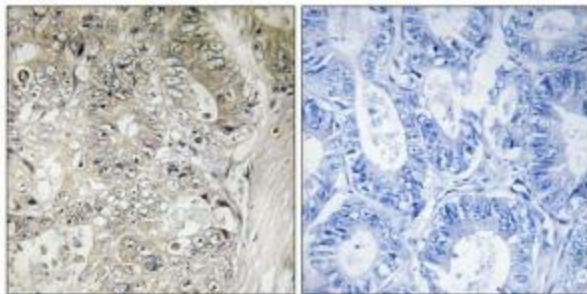
Product data:

Product Type:	Primary Antibodies
Applications:	IF, IHC
Recommended Dilution:	IHC: 1:50~1:100, IF: 1:100~1:500, ELISA: 1:20000
Reactivity:	Human
Host:	Rabbit
Isotype:	IgG
Clonality:	Polyclonal
Immunogen:	The antiserum was produced against synthesized peptide derived from internal of human CST1.
Formulation:	Phosphate buffered saline (without Mg ²⁺ and Ca ²⁺), pH 7.4, 150mM NaCl, 0.02% sodium azide and 50% glycerol.
Concentration:	lot specific
Purification:	The antibody was affinity-purified from rabbit antiserum by affinity-chromatography using epitope-specific immunogen.
Conjugation:	Unconjugated
Storage:	Store at -20°C as received.
Stability:	Stable for 12 months from date of receipt.
Gene Name:	cystatin SN
Database Link:	NP_001889 Entrez Gene 1469 Human P01037
Synonyms:	cystatin 1; cystatin SA-I; cystatin SN; cysteine proteinase inhibitor; OTTHUMP00000030444; OTTHUMP00000164184; type 2 family
Note:	CST1 antibody detects endogenous levels of total CST1 protein.

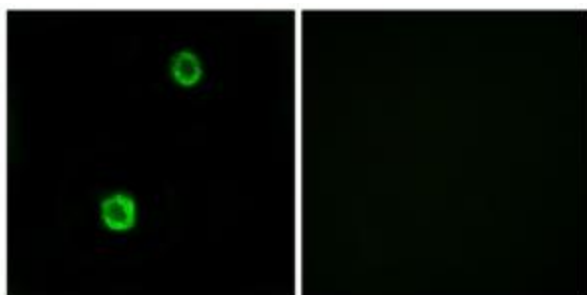


[View online »](#)

Product images:



Immunohistochemistry analysis of paraffin-embedded human colon carcinoma tissue using CST1 antibody. The picture on the right is treated with the synthesized peptide.



Immunofluorescence analysis of MCF-7 cells, using CST1 antibody. The picture on the right is treated with the synthesized peptide.