

## Product datasheet for **TA313698**

### Casein Kinase 1 alpha (CSNK1A1) Rabbit Polyclonal Antibody

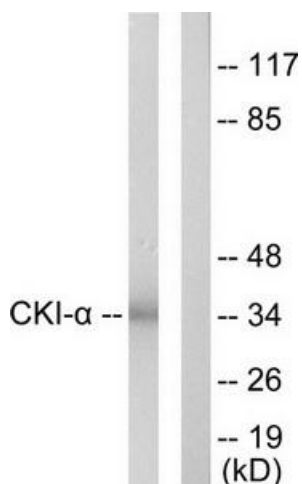
#### Product data:

Product Type:	Primary Antibodies
Applications:	IF, IHC, WB
Recommended Dilution:	WB: 1:500~1:3000, IHC: 1:50~1:100, IF: 1:100~1:500, ELISA: 1:20000
Reactivity:	Human, Mouse, Rat
Host:	Rabbit
Isotype:	IgG
Clonality:	Polyclonal
Immunogen:	The antiserum was produced against synthesized peptide derived from internal of human CKI-a.
Formulation:	Phosphate buffered saline (without Mg <sup>2+</sup> and Ca <sup>2+</sup> ), pH 7.4, 150mM NaCl, 0.02% sodium azide and 50% glycerol.
Concentration:	lot specific
Purification:	The antibody was affinity-purified from rabbit antiserum by affinity-chromatography using epitope-specific immunogen.
Conjugation:	Unconjugated
Storage:	Store at -20°C as received.
Stability:	Stable for 12 months from date of receipt.
Gene Name:	casein kinase 1 alpha 1
Database Link:	<a href="#">NP_001020276</a> <a href="#">Entrez Gene 93687 Mouse</a> <a href="#">Entrez Gene 113927 Rat</a> <a href="#">Entrez Gene 1452 Human</a> <a href="#">P48729</a>
Synonyms:	CK1; CK1a; CKIa; HEL-S-77p; HLCDGP1; PRO2975
Note:	CKI-. antibody detects endogenous levels of total CKI-. protein.
Protein Families:	Druggable Genome, ES Cell Differentiation/IPS, Protein Kinase
Protein Pathways:	Hedgehog signaling pathway, Wnt signaling pathway

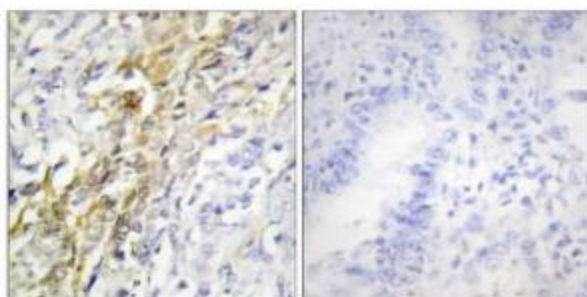


[View online »](#)

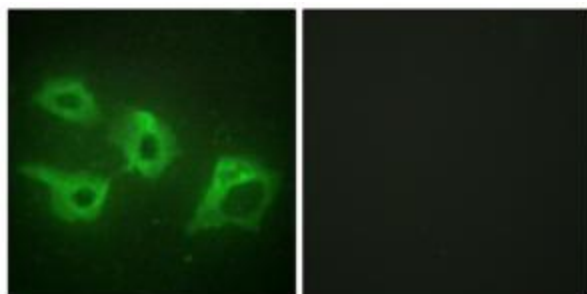
## Product images:



Western blot analysis of extracts from HeLa cells, using CKI-a antibody. The lane on the right is treated with the synthesized peptide.



Immunohistochemistry analysis of paraffin-embedded human lung carcinoma tissue using CKI-a antibody. The picture on the right is treated with the synthesized peptide.



Immunofluorescence analysis of HeLa cells, using CKI-a antibody. The picture on the right is treated with the synthesized peptide.