

Product datasheet for **TA313694**

Corticotropin Releasing Factor Receptor 2 (CRHR2) Rabbit Polyclonal Antibody

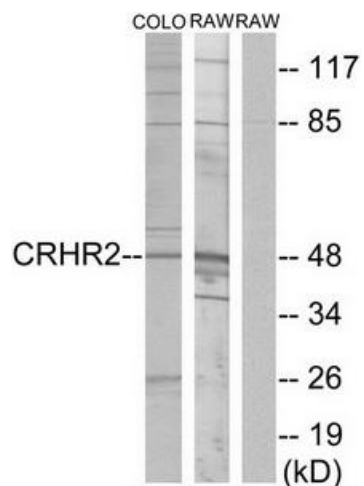
Product data:

Product Type:	Primary Antibodies
Applications:	IF, WB
Recommended Dilution:	WB: 1:500~1:3000, IF: 1:100~1:500, ELISA: 1:10000
Reactivity:	Human, Mouse, Rat
Host:	Rabbit
Isotype:	IgG
Clonality:	Polyclonal
Immunogen:	The antiserum was produced against synthesized peptide derived from internal of human CRHR2.
Formulation:	Phosphate buffered saline (without Mg ²⁺ and Ca ²⁺), pH 7.4, 150mM NaCl, 0.02% sodium azide and 50% glycerol.
Concentration:	lot specific
Purification:	The antibody was affinity-purified from rabbit antiserum by affinity-chromatography using epitope-specific immunogen.
Conjugation:	Unconjugated
Storage:	Store at -20°C as received.
Stability:	Stable for 12 months from date of receipt.
Gene Name:	corticotropin releasing hormone receptor 2
Database Link:	NP_001874 Entrez Gene 12922 Mouse Entrez Gene 64680 Rat Entrez Gene 1395 Human Q13324
Synonyms:	CRF-RB; CRF2; CRFR2; HM-CRF
Note:	CRHR2 antibody detects endogenous levels of total CRHR2 protein.
Protein Families:	Druggable Genome, Transmembrane
Protein Pathways:	Neuroactive ligand-receptor interaction



[View online »](#)

Product images:



Western blot analysis of extracts from COLO205 cells and RAW264.7 cells, using CRHR2 antibody. The lane on the right is treated with the synthesized peptide.



Immunofluorescence analysis of MCF-7 cells, using CRHR2 antibody. The picture on the right is treated with the synthesized peptide.