

Product datasheet for **TA313693**

CRF1 (CRHR1) Rabbit Polyclonal Antibody

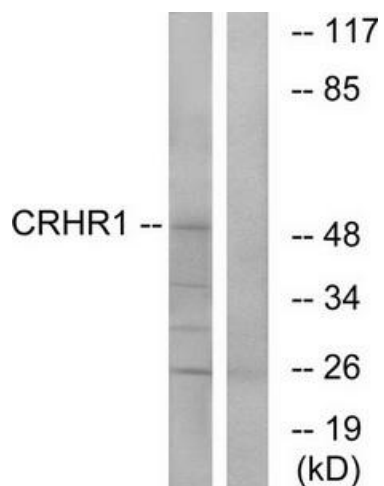
Product data:

Product Type:	Primary Antibodies
Applications:	IF, WB
Recommended Dilution:	WB: 1:500~1:3000, IF: 1:100~1:500, ELISA: 1:5000
Reactivity:	Human, Mouse, Rat
Host:	Rabbit
Isotype:	IgG
Clonality:	Polyclonal
Immunogen:	The antiserum was produced against synthesized peptide derived from internal of human CRHR1.
Formulation:	Phosphate buffered saline (without Mg ²⁺ and Ca ²⁺), pH 7.4, 150mM NaCl, 0.02% sodium azide and 50% glycerol.
Concentration:	lot specific
Purification:	The antibody was affinity-purified from rabbit antiserum by affinity-chromatography using epitope-specific immunogen.
Conjugation:	Unconjugated
Storage:	Store at -20°C as received.
Stability:	Stable for 12 months from date of receipt.
Gene Name:	corticotropin releasing hormone receptor 1
Database Link:	NP_001138618 Entrez Gene 12921 Mouse Entrez Gene 58959 Rat Entrez Gene 1394 Human P34998
Synonyms:	CRF-R; CRF-R-1; CRF-R1; CRF1; CRFR-1; CRFR1; CRH-R-1; CRH-R1; CRHR; CRHR1L
Note:	CRHR1 antibody detects endogenous levels of total CRHR1 protein.
Protein Families:	Druggable Genome, GPCR, Transmembrane
Protein Pathways:	Long-term depression, Neuroactive ligand-receptor interaction

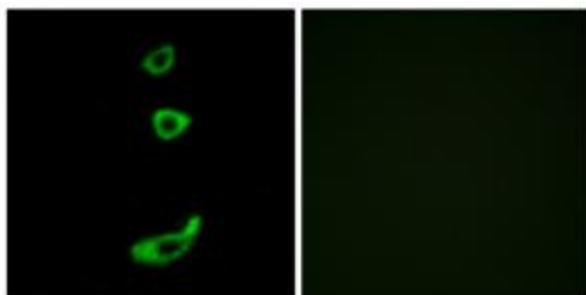


[View online »](#)

Product images:



Western blot analysis of extracts from HT-29 cells, using CRHR1 antibody. The lane on the right is treated with the synthesized peptide.



Immunofluorescence analysis of MCF-7 cells, using CRHR1 antibody. The picture on the right is treated with the synthesized peptide.