

Product datasheet for **TA313692**

ATF6 beta (ATF6B) Rabbit Polyclonal Antibody

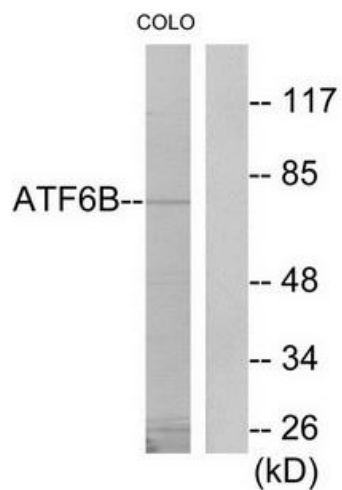
Product data:

Product Type:	Primary Antibodies
Applications:	WB
Recommended Dilution:	WB: 1:500~1:3000, ELISA: 1:20000
Reactivity:	Human
Host:	Rabbit
Isotype:	IgG
Clonality:	Polyclonal
Immunogen:	The antiserum was produced against synthesized peptide derived from internal of human ATF6B.
Formulation:	Phosphate buffered saline (without Mg ²⁺ and Ca ²⁺), pH 7.4, 150mM NaCl, 0.02% sodium azide and 50% glycerol.
Concentration:	lot specific
Purification:	The antibody was affinity-purified from rabbit antiserum by affinity-chromatography using epitope-specific immunogen.
Conjugation:	Unconjugated
Storage:	Store at -20°C as received.
Stability:	Stable for 12 months from date of receipt.
Gene Name:	activating transcription factor 6 beta
Database Link:	NP_001129625 Entrez Gene 1388 Human Q99941
Synonyms:	CREB-RP; CREBL1; G13
Note:	ATF6B antibody detects endogenous levels of total ATF6B protein.
Protein Families:	Transcription Factors



[View online »](#)

Product images:



Western blot analysis of extracts from COLO205 cells, using ATF6B antibody. The lane on the right is treated with the synthesized peptide.