

Product datasheet for **TA313691**

KAT3A / CBP (CREBBP) Rabbit Polyclonal Antibody

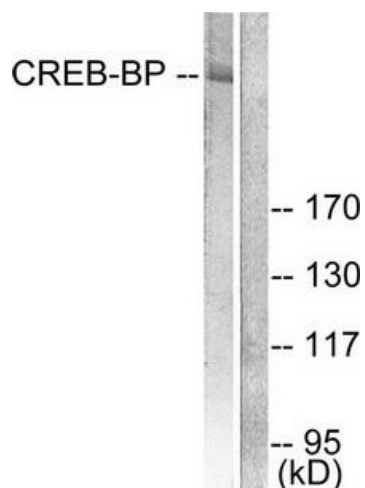
Product data:

Product Type:	Primary Antibodies
Applications:	IF, IHC, WB
Recommended Dilution:	WB: 1:500~1:3000, IHC: 1:50~1:100, IF: 1:100~1:500, ELISA: 1:10000
Reactivity:	Human, Mouse
Host:	Rabbit
Isotype:	IgG
Clonality:	Polyclonal
Immunogen:	The antiserum was produced against synthesized peptide derived from human CREB-BP.
Formulation:	Phosphate buffered saline (without Mg ²⁺ and Ca ²⁺), pH 7.4, 150mM NaCl, 0.02% sodium azide and 50% glycerol.
Concentration:	lot specific
Purification:	The antibody was affinity-purified from rabbit antiserum by affinity-chromatography using epitope-specific immunogen.
Conjugation:	Unconjugated
Storage:	Store at -20°C as received.
Stability:	Stable for 12 months from date of receipt.
Gene Name:	CREB binding protein
Database Link:	NP_001073315 Entrez Gene 12914 Mouse Entrez Gene 1387 Human Q92793
Synonyms:	CBP; KAT3A; RSTS
Note:	CREB-BP antibody detects endogenous levels of total CREB-BP protein.
Protein Families:	Druggable Genome
Protein Pathways:	Adherens junction, Cell cycle, Huntington's disease, Jak-STAT signaling pathway, Long-term potentiation, Melanogenesis, Notch signaling pathway, Pathways in cancer, Prostate cancer, Renal cell carcinoma, TGF-beta signaling pathway, Wnt signaling pathway

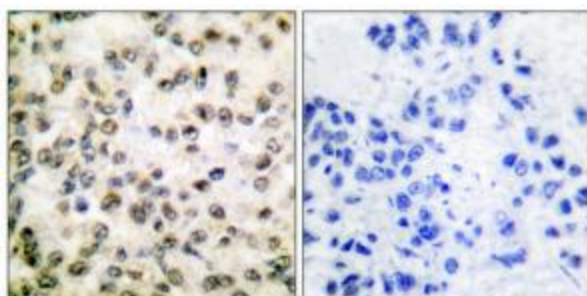


[View online »](#)

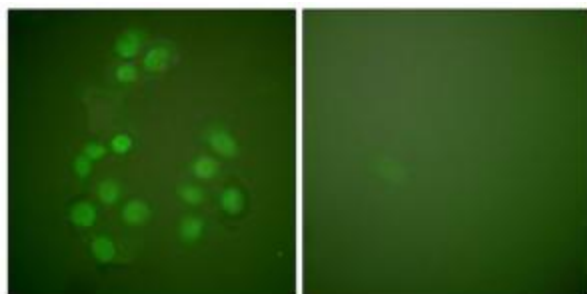
Product images:



Western blot analysis of extracts from HeLa cells, treated with insulin (0.01U/ml, 15mins), using CREB-BP antibody. The lane on the right is treated with the synthesized peptide.



Immunohistochemical analysis of paraffin-embedded human breast carcinoma tissue using CREB-BP antibody. The picture on the right is treated with the synthesized peptide.



Immunofluorescence analysis of A549 cells, using CREB-BP antibody. The picture on the right is treated with the synthesized peptide.