

Product datasheet for **TA313684**

CREB1 Rabbit Polyclonal Antibody

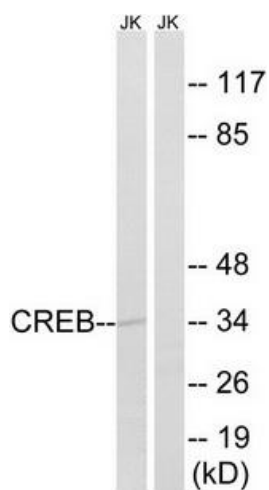
Product data:

Product Type:	Primary Antibodies
Applications:	WB
Recommended Dilution:	WB: 1:500~1:3000, ELISA: 1:20000
Reactivity:	Human, Mouse, Rat
Host:	Rabbit
Isotype:	IgG
Clonality:	Polyclonal
Immunogen:	The antiserum was produced against synthesized non-phosphopeptide derived from human CREB around the phosphorylation site of threonine 100 (S-G-TP-Q-I).
Formulation:	Phosphate buffered saline (without Mg ²⁺ and Ca ²⁺), pH 7.4, 150mM NaCl, 0.02% sodium azide and 50% glycerol.
Concentration:	lot specific
Purification:	The antibody was affinity-purified from rabbit antiserum by affinity-chromatography using epitope-specific immunogen.
Conjugation:	Unconjugated
Storage:	Store at -20°C as received.
Stability:	Stable for 12 months from date of receipt.
Gene Name:	cAMP responsive element binding protein 1
Database Link:	NP_004370 Entrez Gene 12912 Mouse Entrez Gene 81646 Rat Entrez Gene 1385 Human P16220
Synonyms:	CREB
Note:	CREB (Ab-100) antibody detects endogenous levels of total CREB protein.
Protein Families:	Druggable Genome, Transcription Factors
Protein Pathways:	Antigen processing and presentation, Huntington's disease, Melanogenesis, Prostate cancer



[View online »](#)

Product images:



Western blot analysis of extracts from Jurkat cells, using CREB (Ab-100) antibody. The lane on the right is treated with the synthesized peptide.