

Product datasheet for **TA313681**

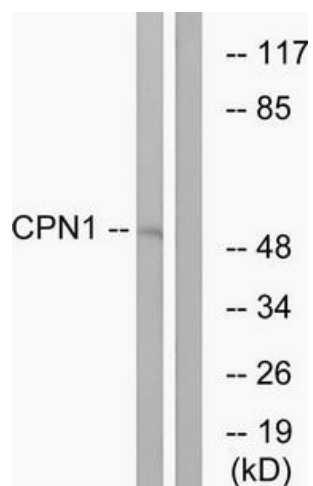
CPN1 Rabbit Polyclonal Antibody

Product data:

Product Type:	Primary Antibodies
Applications:	WB
Recommended Dilution:	WB: 1:500~1:3000, ELISA: 1:20000
Reactivity:	Human
Host:	Rabbit
Isotype:	IgG
Clonality:	Polyclonal
Immunogen:	The antiserum was produced against synthesized peptide derived from C-terminal of human CPN1.
Formulation:	Phosphate buffered saline (without Mg ²⁺ and Ca ²⁺), pH 7.4, 150mM NaCl, 0.02% sodium azide and 50% glycerol.
Concentration:	lot specific
Purification:	The antibody was affinity-purified from rabbit antiserum by affinity-chromatography using epitope-specific immunogen.
Conjugation:	Unconjugated
Storage:	Store at -20°C as received.
Stability:	Stable for 12 months from date of receipt.
Gene Name:	carboxypeptidase N subunit 1
Database Link:	NP_001299 Entrez Gene 1369 Human P15169
Synonyms:	CPN; SCPN
Note:	CPN1 antibody detects endogenous levels of total CPN1 protein.
Protein Families:	Druggable Genome, Protease, Secreted Protein



[View online »](#)

Product images:

Western blot analysis of extracts from RAW264.7 cells, using CPN1 antibody. The lane on the right is treated with the synthesized peptide.