

## Product datasheet for **TA313679**

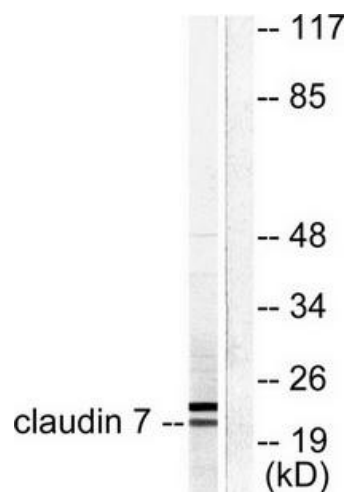
### Claudin 7 (CLDN7) Rabbit Polyclonal Antibody

#### Product data:

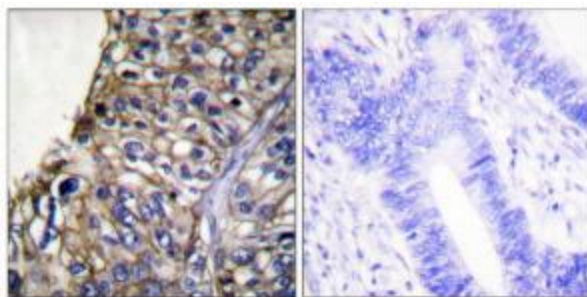
Product Type:	Primary Antibodies
Applications:	IHC, WB
Recommended Dilution:	WB: 1:500~1:3000, IHC: 1:50~1:100, ELISA: 1:20000
Reactivity:	Human, Mouse, Rat
Host:	Rabbit
Isotype:	IgG
Clonality:	Polyclonal
Immunogen:	The antiserum was produced against synthesized peptide derived from human Claudin 7.
Formulation:	Phosphate buffered saline (without Mg <sup>2+</sup> and Ca <sup>2+</sup> ), pH 7.4, 150mM NaCl, 0.02% sodium azide and 50% glycerol.
Concentration:	lot specific
Purification:	The antibody was affinity-purified from rabbit antiserum by affinity-chromatography using epitope-specific immunogen.
Conjugation:	Unconjugated
Storage:	Store at -20°C as received.
Stability:	Stable for 12 months from date of receipt.
Gene Name:	claudin 7
Database Link:	<a href="#">NP_001171951</a> <a href="#">Entrez Gene 53624 Mouse</a> <a href="#">Entrez Gene 65132 Rat</a> <a href="#">Entrez Gene 1366 Human</a> <a href="#">O95471</a>
Synonyms:	CEPTRL2; claudin-1; CLDN-7; CPETRL2; Hs.84359
Note:	Claudin 7 antibody detects endogenous levels of total Claudin 7 protein.
Protein Families:	Transmembrane
Protein Pathways:	Cell adhesion molecules (CAMs), Leukocyte transendothelial migration, Tight junction



[View online »](#)

**Product images:**

Western blot analysis of extracts from 293 cells, using Claudin 7 antibody (#TA313679). The lane on the right is treated with the synthesized peptide.



Immunohistochemical analysis of paraffin-embedded human lung carcinoma tissue using Claudin 7 antibody (#TA313679). The picture on the right is treated with the synthesized peptide.