

Product datasheet for **TA313677**

Claudin 7 (CLDN7) Rabbit Polyclonal Antibody

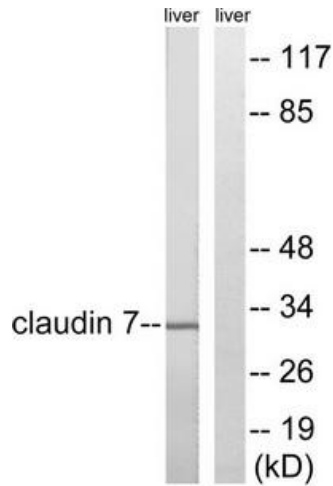
Product data:

Product Type:	Primary Antibodies
Applications:	IHC, WB
Recommended Dilution:	WB: 1:500~1:3000, IHC: 1:50~1:100, ELISA: 1:10000
Reactivity:	Human, Mouse, Rat
Host:	Rabbit
Isotype:	IgG
Clonality:	Polyclonal
Immunogen:	he antiserum was produced against synthesized non-phosphopeptide derived from human Claudin 7 around the phosphorylation site of tyrosine 210 (S-K-E-YP-V).
Formulation:	Phosphate buffered saline (without Mg ²⁺ and Ca ²⁺), pH 7.4, 150mM NaCl, 0.02% sodium azide and 50% glycerol.
Concentration:	lot specific
Purification:	The antibody was affinity-purified from rabbit antiserum by affinity-chromatography using epitope-specific immunogen.
Conjugation:	Unconjugated
Storage:	Store at -20°C as received.
Stability:	Stable for 12 months from date of receipt.
Gene Name:	claudin 7
Database Link:	NP_001171951 Entrez Gene 53624 Mouse Entrez Gene 65132 Rat Entrez Gene 1366 Human O95471
Synonyms:	CEPTRL2; claudin-1; CLDN-7; CPETRL2; Hs.84359
Note:	Claudin 7 (Ab-210) antibody detects endogenous levels of total Claudin 7 protein.
Protein Families:	Transmembrane
Protein Pathways:	Cell adhesion molecules (CAMs), Leukocyte transendothelial migration, Tight junction

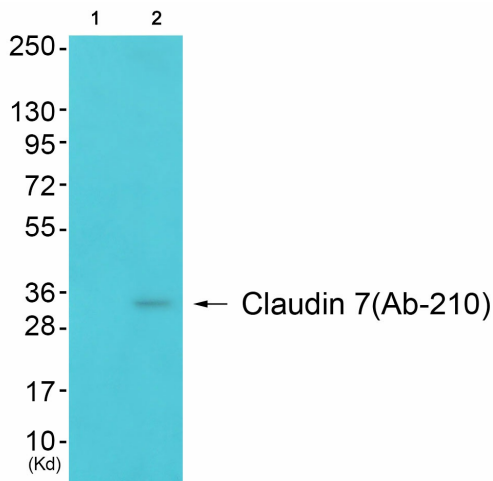


[View online »](#)

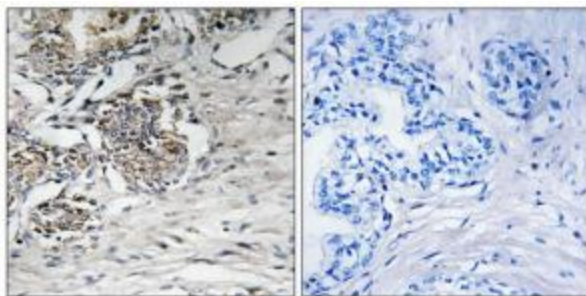
Product images:



Western blot analysis of extracts from rat liver cells, using Claudin 7 (Ab-210) antibody. The lane on the right is treated with the synthesized peptide.



Western blot analysis of extracts from 3T3 cells (Lane 2), using Claudin 7 (Ab-210) Antibody. The lane on the left is treated with synthesized peptide.



Immunohistochemistry analysis of paraffin-embedded human prostate carcinoma tissue using Claudin 7 (Ab-210) antibody. The picture on the right is treated with the synthesized peptide.