

## Product datasheet for **TA313674**

### Claudin 4 (CLDN4) Rabbit Polyclonal Antibody

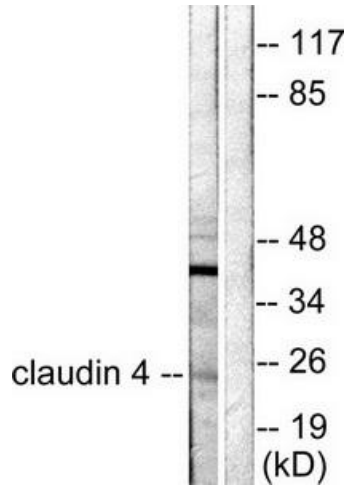
#### Product data:

|                       |  |
|-----------------------|--|
| Product Type:         | Primary Antibodies   |
| Applications:         | IHC, WB  |
| Recommended Dilution: | WB: 1:500~1:3000, IHC: 1:50~1:100, ELISA: 1:5000   |
| Reactivity:           | Human, Mouse, Rat  |
| Host:                 | Rabbit   |
| Isotype:              | IgG  |
| Clonality:            | Polyclonal   |
| Immunogen:            | The antiserum was produced against synthesized peptide derived from human Claudin 4.   |
| Formulation:          | Phosphate buffered saline (without Mg <sup>2+</sup> and Ca <sup>2+</sup> ), pH 7.4, 150mM NaCl, 0.02% sodium azide and 50% glycerol.   |
| Concentration:        | lot specific   |
| Purification:         | The antibody was affinity-purified from rabbit antiserum by affinity-chromatography using epitope-specific immunogen.  |
| Conjugation:          | Unconjugated   |
| Storage:              | Store at -20°C as received.  |
| Stability:            | Stable for 12 months from date of receipt.   |
| Gene Name:            | claudin 4  |
| Database Link:        | <a href="#">NP_001296</a><br><a href="#">Entrez Gene 12740 Mouse</a> <a href="#">Entrez Gene 304407 Rat</a> <a href="#">Entrez Gene 1364 Human</a><br><a href="#">O14493</a> |
| Synonyms:             | CPE-R; CPER; CPETR; CPETR1; hCPE-R; WBSCR8   |
| Note:                 | Claudin 4 antibody detects endogenous levels of total Claudin 4 protein.   |
| Protein Families:     | Druggable Genome, Transmembrane  |
| Protein Pathways:     | Cell adhesion molecules (CAMs), Leukocyte transendothelial migration, Tight junction   |

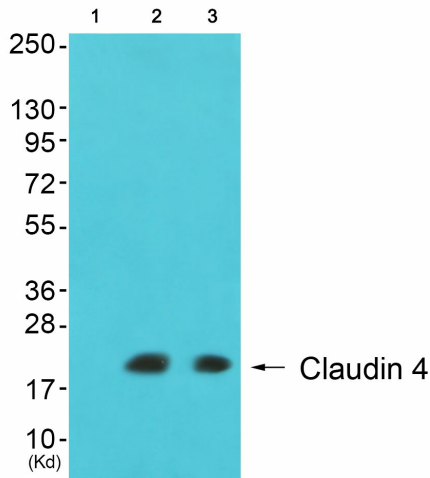


[View online »](#)

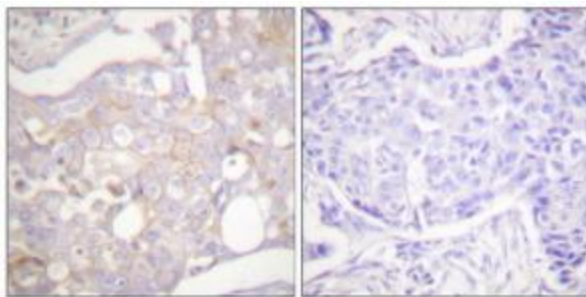
Product images:



Western blot analysis of extracts from HeLa cells, using Claudin 4 antibody (#TA313674). The lane on the right is treated with the synthesized peptide.



Western blot analysis of extracts from 293 cells (Lane 2) and cos-7 cells (Lane 3), using Claudin 4 Antibody. The lane on the left is treated with synthesized peptide.



Immunohistochemical analysis of paraffin-embedded human breast carcinoma tissue using Claudin 4 antibody (#TA313674). The picture on the right is treated with the synthesized peptide.