

Product datasheet for **TA313672**

Carboxypeptidase H (CPE) Rabbit Polyclonal Antibody

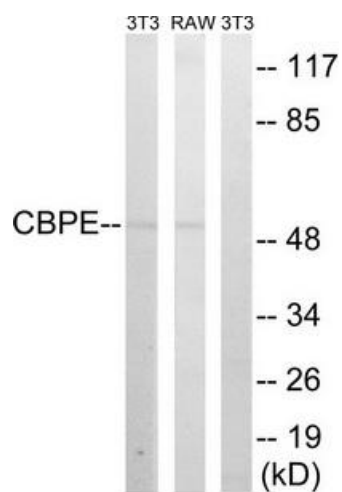
Product data:

Product Type:	Primary Antibodies
Applications:	WB
Recommended Dilution:	WB: 1:500~1:3000, ELISA: 1:5000
Reactivity:	Mouse, Rat, Human
Host:	Rabbit
Isotype:	IgG
Clonality:	Polyclonal
Immunogen:	The antiserum was produced against synthesized peptide derived from internal of human CPE.Purification: The antibody was affinity-purified from
Formulation:	Phosphate buffered saline (without Mg ²⁺ and Ca ²⁺), pH 7.4, 150mM NaCl, 0.02% sodium azide and 50% glycerol.
Concentration:	lot specific
Purification:	The antibody was affinity-purified from rabbit antiserum by affinity-chromatography using epitope-specific immunogen.
Conjugation:	Unconjugated
Storage:	Store at -20°C as received.
Stability:	Stable for 12 months from date of receipt.
Gene Name:	carboxypeptidase E
Database Link:	NP_001864 Entrez Gene 12876 MouseEntrez Gene 25669 RatEntrez Gene 1363 Human P16870
Synonyms:	CPH
Note:	CPE antibody detects endogenous levels of total CPE protein.
Protein Families:	Druggable Genome, Protease, Secreted Protein
Protein Pathways:	Type I diabetes mellitus



[View online »](#)

Product images:



Western blot analysis of extracts from 3T3 cells and RAW264.7 cells, using CPE antibody. The lane on the right is treated with the synthesized peptide.