

## Product datasheet for **TA313671**

### Carboxypeptidase B2 (CPB2) Rabbit Polyclonal Antibody

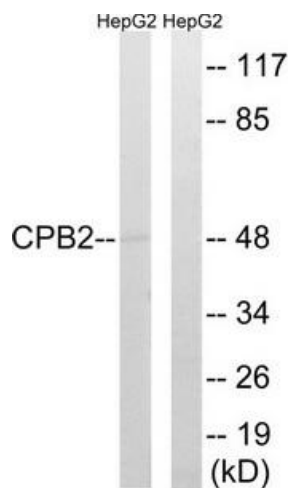
#### Product data:

Product Type:	Primary Antibodies
Applications:	WB
Recommended Dilution:	WB: 1:500~1:3000, ELISA: 1:40000, References:
Reactivity:	Human
Host:	Rabbit
Isotype:	IgG
Clonality:	Polyclonal
Immunogen:	The antiserum was produced against synthesized peptide derived from internal of human CPB2.
Formulation:	Phosphate buffered saline (without Mg <sup>2+</sup> and Ca <sup>2+</sup> ), pH 7.4, 150mM NaCl, 0.02% sodium azide and 50% glycerol.
Concentration:	lot specific
Purification:	The antibody was affinity-purified from rabbit antiserum by affinity-chromatography using epitope-specific immunogen.
Conjugation:	Unconjugated
Storage:	Store at -20°C as received.
Stability:	Stable for 12 months from date of receipt.
Gene Name:	carboxypeptidase B2
Database Link:	<a href="#">NP_001863</a> <a href="#">Entrez Gene 1361 Human</a> <a href="#">Q96IY4</a>
Synonyms:	CPU; PCPB; TAFI
Note:	CPB2 antibody detects endogenous levels of total CPB2 protein.
Protein Families:	Druggable Genome, Protease, Secreted Protein
Protein Pathways:	Complement and coagulation cascades



[View online »](#)

## Product images:



Western blot analysis of extracts from HepG2 cells, using CPB2 antibody. The lane on the right is treated with the synthesized peptide.