

Product datasheet for **TA313666**

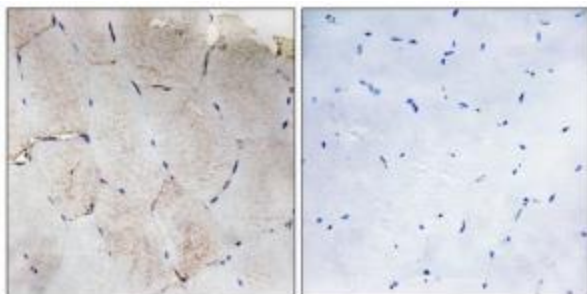
COL12A1 Rabbit Polyclonal Antibody

Product data:

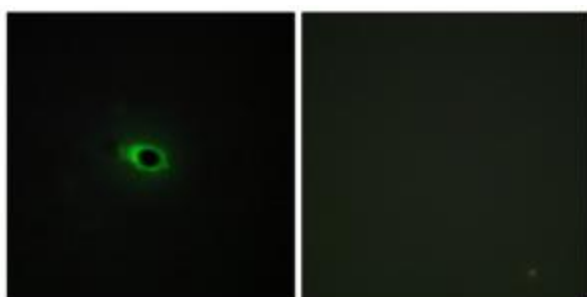
Product Type:	Primary Antibodies
Applications:	IF, IHC
Recommended Dilution:	IHC: 1:50~1:100, IF: 1:100~1:500, ELISA: 1:1000
Reactivity:	Human
Host:	Rabbit
Isotype:	IgG
Clonality:	Polyclonal
Immunogen:	The antiserum was produced against synthesized peptide derived from internal of human Collagen XII a1.
Formulation:	Phosphate buffered saline (without Mg ²⁺ and Ca ²⁺), pH 7.4, 150mM NaCl, 0.02% sodium azide and 50% glycerol.
Concentration:	lot specific
Purification:	The antibody was affinity-purified from rabbit antiserum by affinity-chromatography using epitope-specific immunogen.
Conjugation:	Unconjugated
Storage:	Store at -20°C as received.
Stability:	Stable for 12 months from date of receipt.
Gene Name:	collagen type XII alpha 1 chain
Database Link:	NP_004361 Entrez Gene 1303 Human Q99715
Synonyms:	BA209D8.1; COL12A1L; DJ234P15.1
Note:	Collagen XII .1 antibody detects endogenous levels of total Collagen XII .1 protein.



[View online »](#)

Product images:

Immunohistochemistry analysis of paraffin-embedded human skeletal muscle tissue using Collagen XII a1 antibody. The picture on the right is treated with the synthesized peptide.



Immunofluorescence analysis of COS-7 cells, using Collagen XII a1 antibody. The picture on the right is treated with the synthesized peptide.