

Product datasheet for **TA313660**

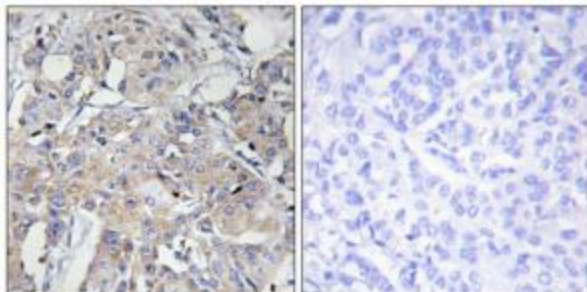
Collagen VI (COL6A3) Rabbit Polyclonal Antibody

Product data:

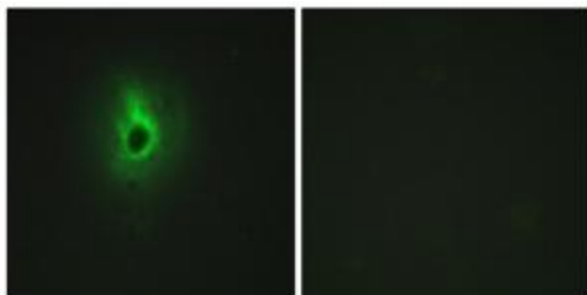
Product Type:	Primary Antibodies
Applications:	IF, IHC
Recommended Dilution:	IHC: 1:50~1:100, IF: 1:100~1:500, ELISA: 1:40000
Reactivity:	Human, Mouse
Host:	Rabbit
Isotype:	IgG
Clonality:	Polyclonal
Immunogen:	The antiserum was produced against synthesized peptide derived from internal of human Collagen VI α 3.
Formulation:	Phosphate buffered saline (without Mg^{2+} and Ca^{2+}), pH 7.4, 150mM NaCl, 0.02% sodium azide and 50% glycerol.
Concentration:	lot specific
Purification:	The antibody was affinity-purified from rabbit antiserum by affinity-chromatography using epitope-specific immunogen.
Conjugation:	Unconjugated
Storage:	Store at $-20^{\circ}C$ as received.
Stability:	Stable for 12 months from date of receipt.
Gene Name:	collagen type VI alpha 3 chain
Database Link:	NP_004360 Entrez Gene 12835 Mouse Entrez Gene 1293 Human P12111
Synonyms:	DKFZp686D23123; DKFZp686K04147; DKFZp686N0262; FLJ34702; FLJ98399
Note:	Collagen VI .3 antibody detects endogenous levels of total Collagen VI .3 protein.
Protein Families:	Druggable Genome
Protein Pathways:	ECM-receptor interaction, Focal adhesion



[View online »](#)

Product images:

Immunohistochemistry analysis of paraffin-embedded human breast carcinoma tissue using Collagen VI a3 antibody. The picture on the right is treated with the synthesized peptide.



Immunofluorescence analysis of HeLa cells, using Collagen VI a3 antibody. The picture on the right is treated with the synthesized peptide.