

Product datasheet for **TA313659**

Collagen VI (COL6A2) Rabbit Polyclonal Antibody

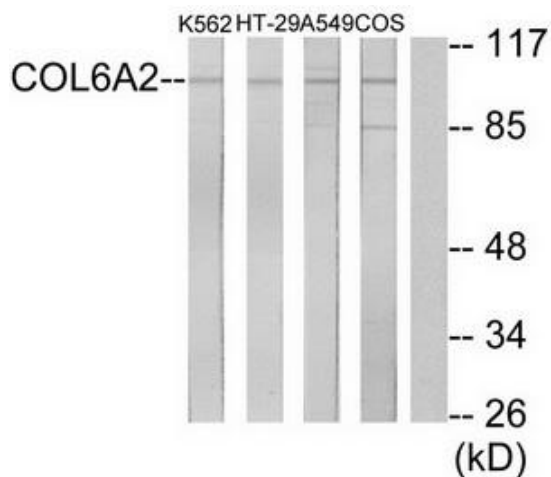
Product data:

Product Type:	Primary Antibodies
Applications:	IHC, WB
Recommended Dilution:	WB: 1:500~1:3000, IHC: 1:50~1:100, ELISA: 1:10000
Reactivity:	Human, Mouse
Host:	Rabbit
Isotype:	IgG
Clonality:	Polyclonal
Immunogen:	The antiserum was produced against synthesized peptide derived from internal of human Collagen VI a2.
Formulation:	Phosphate buffered saline (without Mg ²⁺ and Ca ²⁺), pH 7.4, 150mM NaCl, 0.02% sodium azide and 50% glycerol.
Concentration:	lot specific
Purification:	The antibody was affinity-purified from rabbit antiserum by affinity-chromatography using epitope-specific immunogen.
Conjugation:	Unconjugated
Storage:	Store at -20°C as received.
Stability:	Stable for 12 months from date of receipt.
Gene Name:	collagen type VI alpha 2
Database Link:	NP_001840 Entrez Gene 12834 Mouse Entrez Gene 1292 Human P12110
Synonyms:	BTHLM1; PP3610; UCMD1
Note:	Collagen VI .2 antibody detects endogenous levels of total Collagen VI .2 protein.
Protein Families:	Secreted Protein
Protein Pathways:	ECM-receptor interaction, Focal adhesion

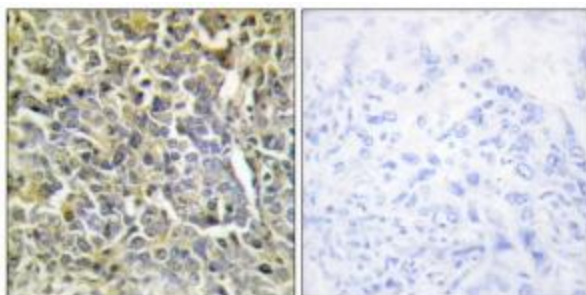


[View online »](#)

Product images:



Western blot analysis of extracts from K562 cells, HT-29 cells, A549 cells and COS-7 cells, using Collagen VI a2 antibody. The lane on the right is treated with the synthesized peptide.



Immunohistochemistry analysis of paraffin-embedded human lung carcinoma tissue using Collagen VI a2 antibody. The picture on the right is treated with the synthesized peptide.