

Product datasheet for **TA313655**

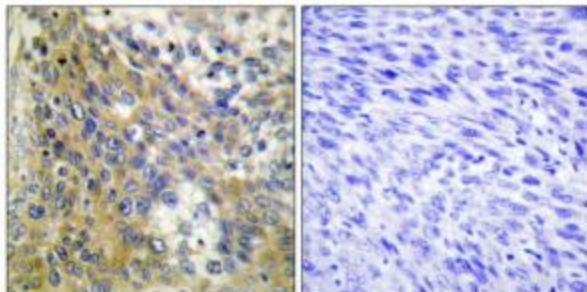
Collagen IV alpha 6 (COL4A6) Rabbit Polyclonal Antibody

Product data:

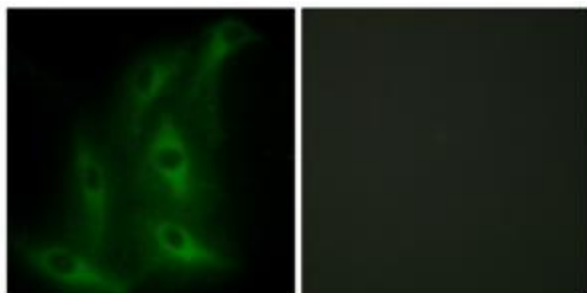
Product Type:	Primary Antibodies
Applications:	IF, IHC
Recommended Dilution:	IHC: 1:50~1:100, IF: 1:100~1:500, ELISA: 1:40000
Reactivity:	Human
Host:	Rabbit
Isotype:	IgG
Clonality:	Polyclonal
Immunogen:	The antiserum was produced against synthesized peptide derived from internal of human Collagen IV a6.
Formulation:	Phosphate buffered saline (without Mg ²⁺ and Ca ²⁺), pH 7.4, 150mM NaCl, 0.02% sodium azide and 50% glycerol.
Concentration:	lot specific
Purification:	The antibody was affinity-purified from rabbit antiserum by affinity-chromatography using epitope-specific immunogen.
Conjugation:	Unconjugated
Storage:	Store at -20°C as received.
Stability:	Stable for 12 months from date of receipt.
Gene Name:	collagen type IV alpha 6 chain
Database Link:	NP_001838 Entrez Gene 1288 Human Q14031
Synonyms:	CXDELq22.3; DELXq22.3; DFNX6
Note:	Collagen IV .6 antibody detects endogenous levels of total Collagen IV .6 protein.
Protein Pathways:	ECM-receptor interaction, Focal adhesion, Pathways in cancer, Small cell lung cancer



[View online »](#)

Product images:

Immunohistochemistry analysis of paraffin-embedded human cervix carcinoma tissue using Collagen IV a6 antibody. The picture on the right is treated with the synthesized peptide.



Immunofluorescence analysis of HeLa cells, using Collagen IV a6 antibody. The picture on the right is treated with the synthesized peptide.